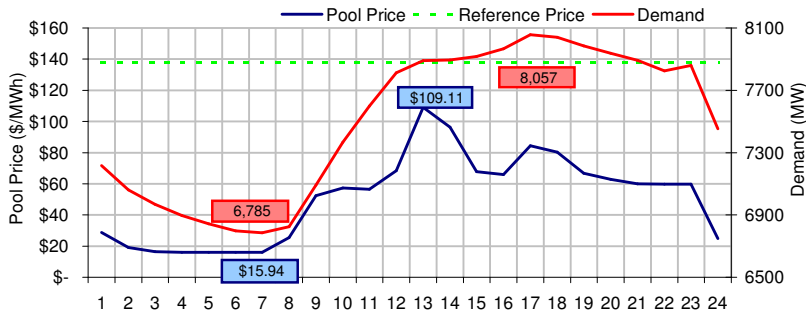
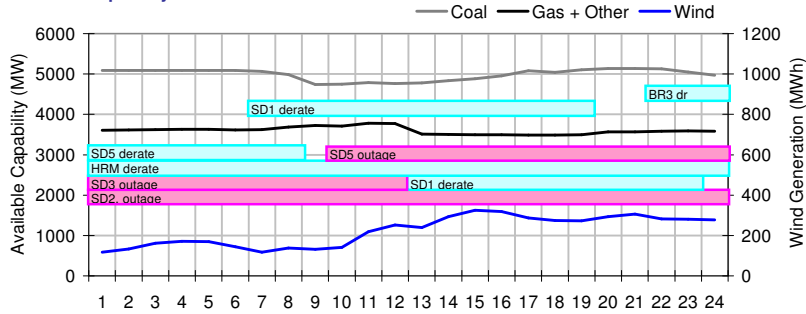


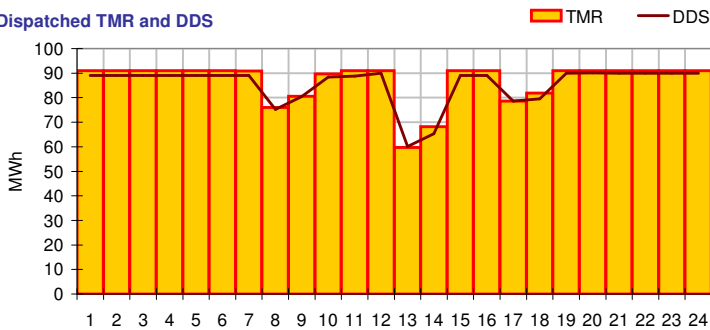
Pool Price and Demand



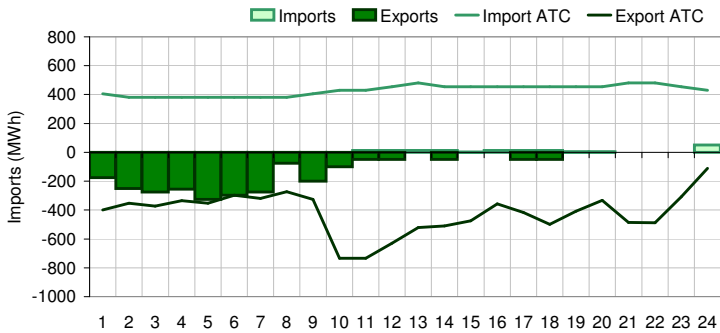
Available Capacity



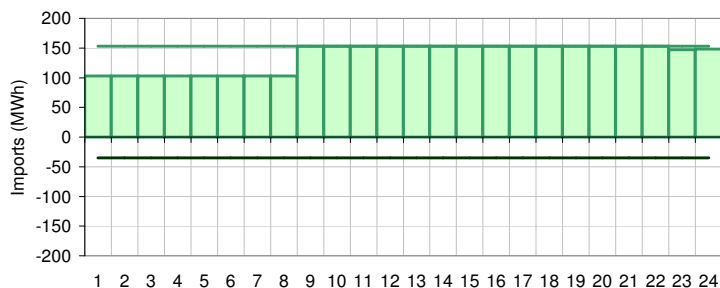
Dispatched TMR and DDS



BC Intertie



SK Intertie



Pool Price (\$/MWh)

	Today	This day last week	30 day rolling average	Year to date
average	\$ 51.08	\$ 34.03	\$ 59.39	\$ 89.60
on peak	NA	NA	\$ 85.52	\$ 115.34
off peak	\$ 51.08	\$ 34.03	\$ 22.76	\$ 51.17

Gas price

	Today	This day last week	30 day rolling average	Year to date
AECO-C (\$/GJ)	\$ 9.21	\$ 11.04	\$ 10.63	\$ 8.73
Heat rate (GJ/MWh)	5.55	3.08	5.59	10.26

Demand (MWh)

	Today	This day last week	30 day rolling average	Year to date
average	7499	7562	7778	7950
on peak	NA	NA	8196	8324
off peak	7499	7562	7184	7395

Coal

	Today	This day last week	30 day rolling average	Year to date
average AC/MC (%)	83.1%	77.0%	82.3%	84.8%
maximum AC/MC (%)	85.6%	78.7%	85.3%	
minimum AC/MC (%)	78.9%	74.8%	78.4%	

Gas + Other

	Today	This day last week	30 day rolling average	Year to date
average AC/MC (%)	74.0%	75.5%	71.4%	59.9%
maximum AC/MC (%)	77.7%	76.1%	73.3%	
minimum AC/MC (%)	71.8%	74.6%	68.3%	

Wind Generation (MWh)

	Today	This day last week	30 day rolling average	Year to date
average	223	262		
minimum	117	178		
maximum	325	345		

Transmission Must Run (MWh)

	Today	This day last week	30 day rolling average	Year to date
average	87	89		
minimum	60	76		
maximum	91	93		

Dispatch Down Service (MWh)

	Today	This day last week	30 day rolling average	Year to date
average	85	100		
minimum	60	43		
maximum	90	131		

Intertie

	Today	This day last week	30 day rolling average	Year to date
Mid-C On-Peak	NA	NA	\$ 59.99	\$ 68.33
Mid-C Off-Peak	\$ 61.23	\$ 6.77	\$ 8.00	\$ 51.37
Minn Hub On-Peak	\$ 68.92	\$ 46.95	\$ 65.15	\$ 66.99
Minn Hub Off-Peak	\$ 10.86	\$ 18.93	\$ 12.43	\$ 29.30
Exchange rate (US:CDN)	1.00977	1.02009		

	Today	This day last week	30 day rolling average	Year to date
BC Import % of ATC	1.5%	84.6%	71.3%	41.0%
SK Import % of ATC	88.8%	91.8%	59.3%	52.6%
BC Export % of ATC	0.0%	0.0%	1.1%	17.6%
SK Export % of ATC	0.0%	36.7%	15.4%	16.6%

Summary of Average Pool Price and Gas price

