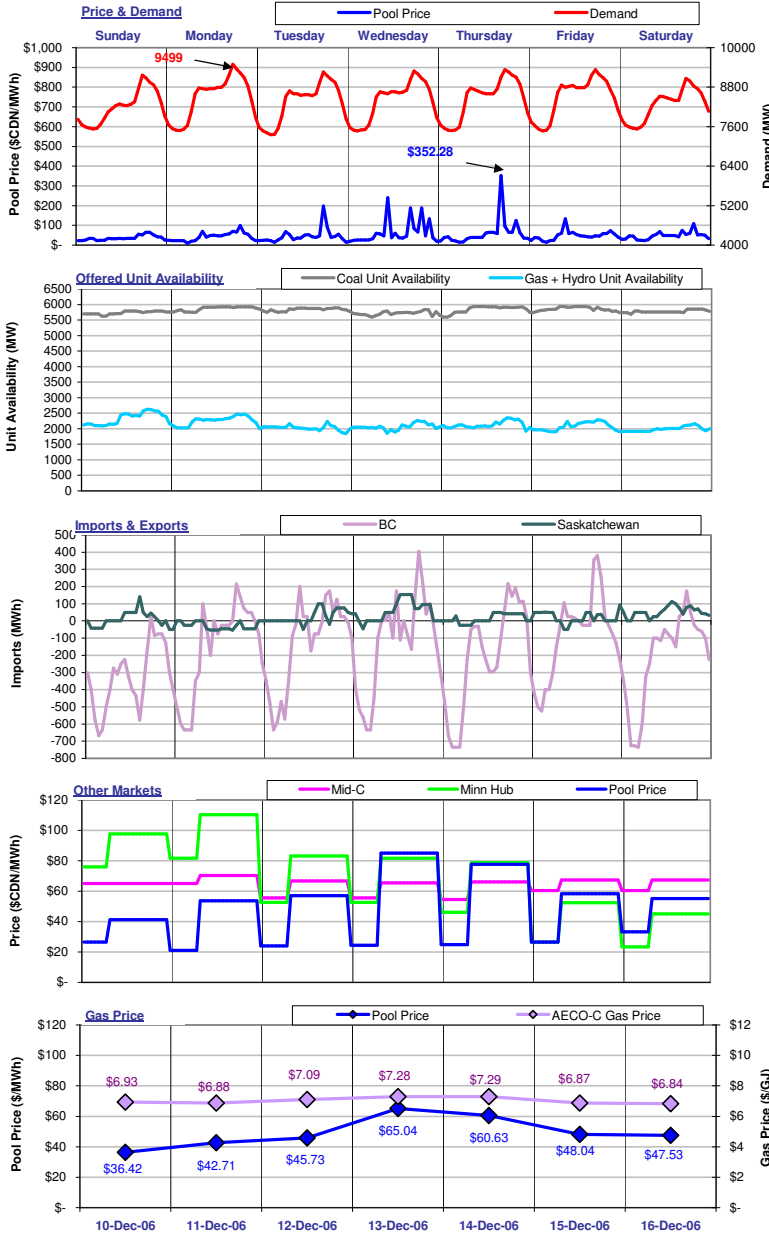


The Market Monitor

WATCHING THE MARKET : your fact source

Week Ending December 16, 2006

Weekly Highlights



For the week ending December 16, 2006, **Pool Price** averaged \$49.44/MWh and ranged from a minimum of \$9.58/MWh in HE06 on Monday to a maximum of \$352.28/MWh in HE17 on Thursday. **Demand** reached a high of 9499 MW in HE18 on Monday and a low of 7354 MW in HE04 on Tuesday. Average demand for the week was 8373 MW. **Pool Price** and **Demand** were positively correlated last week with an R-squared value of 0.27.

Coal Unit Availability averaged 5804 MW last week. This is an equivalent availability of 99% (based on MCR). **Gas and Hydro Unit Availability** averaged 2126 MW last week, which is an equivalent of 37% (based on MCR).

Availability numbers are based on MW offered into the energy merit order.

Alberta was a net exporter to BC last week with total exports equal to 30,058 MWh. Alberta was a net importer from Saskatchewan last week with total imports equal to 3,424 MWh. Overall, Alberta exported 26,634 MWh of electricity last week.

Pool Prices were generally lower than prices in **Mid-C** and lower than prices in **Minn Hub** last week. **Mid-C** prices averaged \$67.19/MWh on-peak and \$59.58/MWh off-peak. **Minn Hub** prices averaged \$75.22/MWh on-peak and \$51.23/MWh off-peak.

Prices in \$CDN at an exchange rate of 1.15005.

The average **AECO-C Gas Price** last week was \$7.03/GJ and ranged from a minimum of \$6.84/GJ to \$7.29/GJ. Prevailing gas prices resulted in market heat rates ranging from a low of 5.26 GJ/MWh to a high of 8.93GJ/MWh. The average market heat rate for the week was 7.02 GJ/MWh.

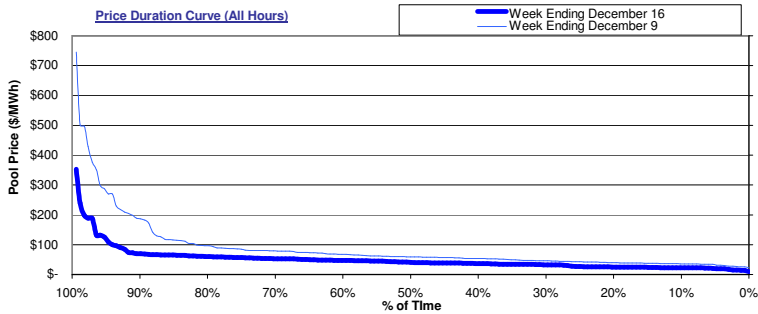


Alberta's Market Surveillance Administrator is in place to monitor the fair, efficient and openly competitive operation of all electricity markets within the province. The Market Monitor is a weekly publication by the MSA intended to educate industry participants and the public on market activities for the previous week. Any questions regarding the material in this publication should be directed to MSA staff. Our contact information is available on the MSA website: www.albertamsa.ca

Wholesale Market

Weekly Market Statistics

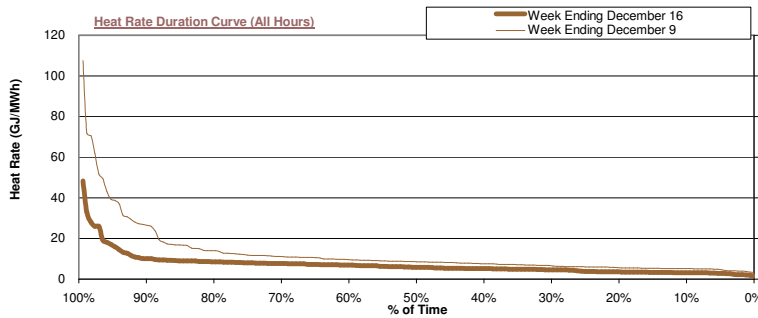
	Sunday 10-Dec	Monday 11-Dec	Tuesday 12-Dec	Wednesday 13-Dec	Thursday 14-Dec	Friday 15-Dec	Saturday 16-Dec	Average	Last Week	% Change	YTD
Pool Price											
Average	\$ 36.42	\$ 42.71	\$ 45.73	\$ 65.04	\$ 60.63	\$ 48.04	\$ 47.53	\$ 49.44	\$ 88.04	-43.8%	\$ 81.89
On-Peak	NA	\$ 53.78	\$ 57.06	\$ 85.14	\$ 77.62	\$ 58.37	\$ 55.15	\$ 64.52	\$ 89.23	-27.7%	\$ 106.99
Off-Peak	\$ 36.42	\$ 20.56	\$ 23.06	\$ 24.85	\$ 26.65	\$ 27.38	\$ 32.29	\$ 29.34	\$ 86.45	-66.1%	\$ 44.27
COV	0.35	0.50	0.81	0.92	1.11	0.49	0.39	0.65	0.72	-9.7%	
Heat Rate											
Average	5.26	6.21	6.45	8.93	8.32	6.99	6.95	7.02	12.08	-41.9%	13.27
On-Peak	NA	7.82	8.04	11.69	10.65	8.50	8.07	9.13	12.42	-26.5%	17.34
Off-Peak	5.26	2.99	3.25	3.41	3.66	3.99	4.72	4.20	11.63	-63.9%	7.17
Demand											
Average	8,202	8,486	8,335	8,392	8,444	8,491	8,257	8,373	8,397	-0.3%	7,910
Minimum	7,533	7,477	7,354	7,473	7,483	7,467	7,533	7,474	7,510	-0.5%	6,351
Maximum	9,165	9,499	9,264	9,290	9,331	9,329	9,070	9,278	9,232	0.5%	9,661
Coal Unit Availability											
Average	5,733	5,869	5,837	5,716	5,843	5,855	5,778	5,804	5,325		5,266
Utilization	98%	100%	100%	98%	100%	100%	99%	99%	91%	8.2%	90%
Gas and Hydro Unit Availability											
Average	2,329	2,256	2,029	2,067	2,130	2,078	1,992	2,126	2,398		2,154
Utilization	49%	47%	43%	43%	45%	44%	42%	45%	50%	-5.7%	45%



The price duration curves show the % of time that prices were at or below a certain value during the week.

For the week ending **December 16**, prices were at or below:

\$20/MWh	5% of the time
\$50/MWh	65% of the time
\$100/MWh	94% of the time
\$250/MWh	99% of the time
\$500/MWh	100% of the time



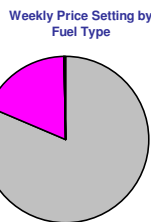
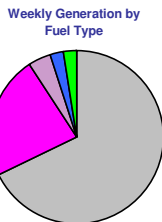
The heat rate duration curves show the % of time that the implied market heat rate was at or below a certain value during the week. For the week ending **December 16** implied market heat rates were at or below:

5.0 GJ/MWh	39% of the time
10.0 GJ/MWh	89% of the time
15.0 GJ/MWh	95% of the time
20.0 GJ/MWh	97% of the time

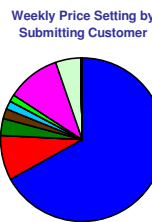
Market Share Statistics

By Fuel Type:

■ Coal
 ■ Gas - Cogen
 ■ Gas - Other
 ■ Hydro
 ■ Other



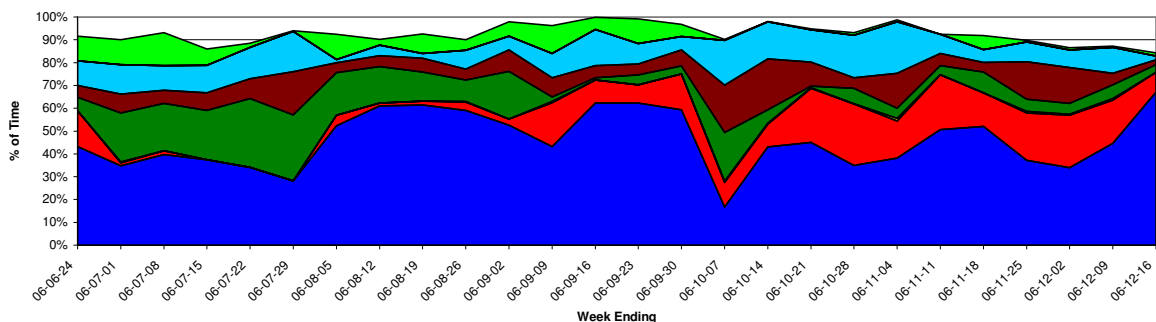
By Submitting Customer:



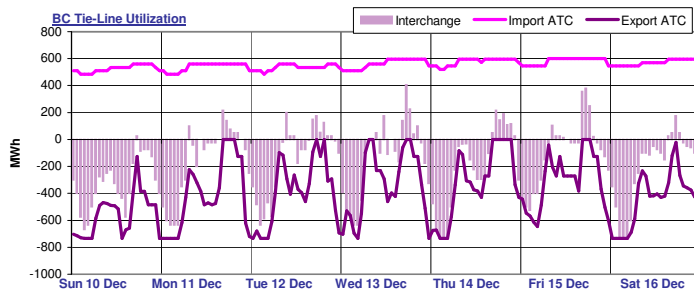
Last week, **coal units** were responsible for **67.8%** of the generation in the province and set price **81.3%** of the time. **Gas-cogen** units accounted for **23.1%** of the generation and set price **18.4%** of the time last week while **other gas** units made up **4.2%** of generation and set price **0.0%** of the time.

A total of **9** market participants set price last week. **One** market participants set price more than **20%** of the time last week. The top price setter set price **67.0%** of the time and the top five price setters set price a total of **94.5%** of the time.

Weekly Price Setting by Submitting Customer

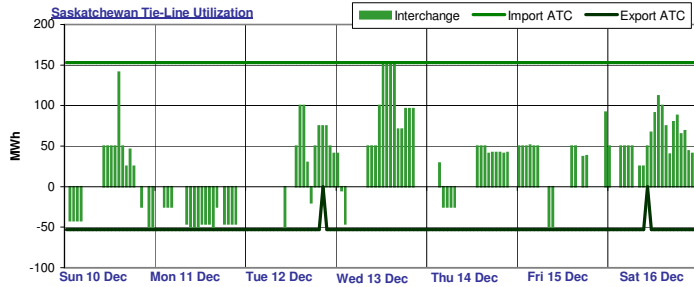


Interties

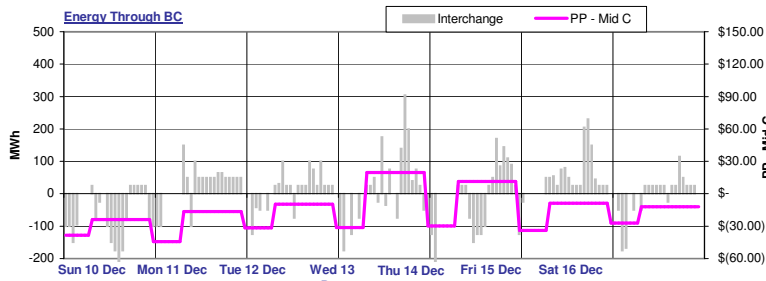


BC import capacity was 5% utilized last week while BC export capacity was 43% utilized. Energy was being imported into Alberta over the BC tie-line 26% of the time and exported out of Alberta over the BC tie-line 71% of the time last week. There was no activity on the BC tie-line 4% of the time last week.

Note: External reserve contract volumes have been subtracted from the BC import ATC as this capacity is not available to import energy into Alberta.



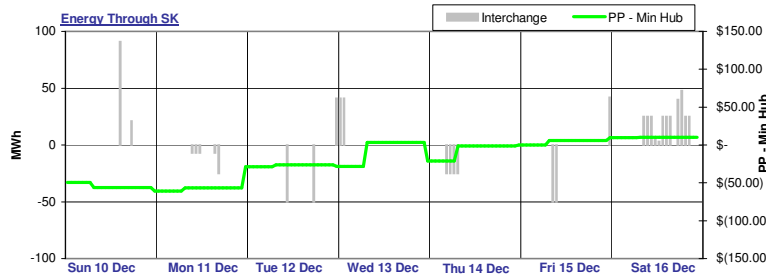
Saskatchewan import capacity was 18% utilized last week while Saskatchewan export capacity was 15% utilized. Energy was being imported into Alberta over the Saskatchewan tie-line 45% of the time and exported out of Alberta over the Saskatchewan tie-line 20% of the time last week. There was no activity on the Saskatchewan tie-line 36% of the time last week.



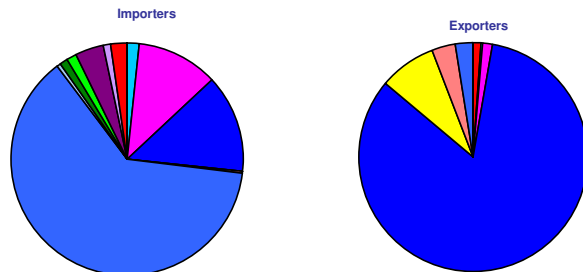
Last week, Alberta spot prices were mostly lower relative to prices in the Pacific Northwest as represented by Mid-C index prices, supporting export activity across the Alberta - BC interconnection.

Alberta prices were generally lower than prices in MAPP as represented by spot prices at the Minnesota Hub, which generally support export activity across the Alberta - Saskatchewan interconnection.

Note: Platt's day-ahead strip prices used in energy through BC and SK graphs.



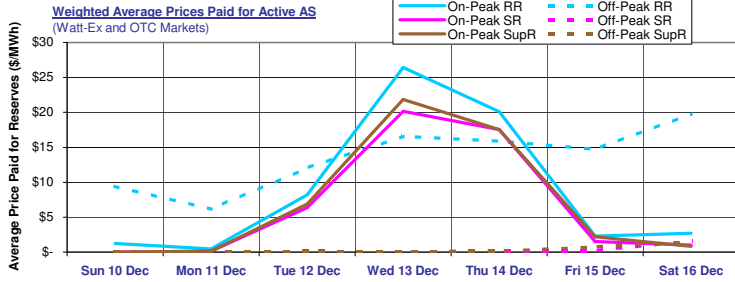
Tie-Line Market Shares



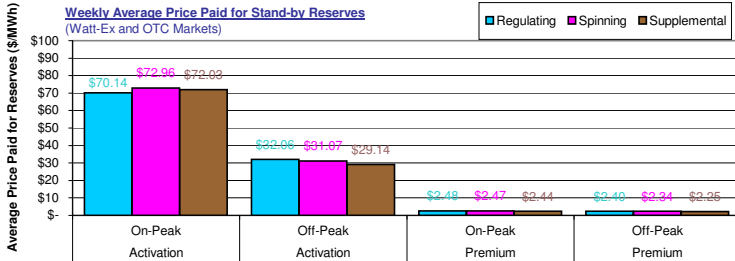
Last week, there were a total of 12 importers. The most active importer had a market share of 46.0% while the second most active importer had a market share of 35.5%. There were a total of 5 exporters last week. The most active exporter had a market share of 50.2% while the next largest exporter had a market share of 32.4%.

Note: Market shares are based on the combined activity on both interties.

Ancillary Services Market

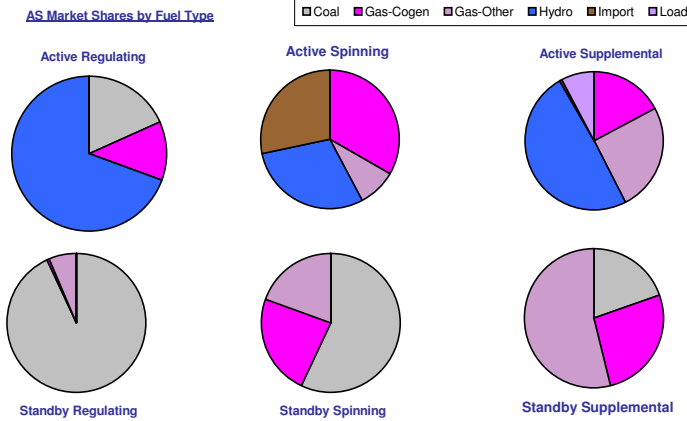


Average on-peak prices paid for active ancillary services last week were **\$8.75/MWh**, **\$6.82/MWh** and **\$7.22/MWh** respectively for active **regulating**, **spinning** and **supplemental** reserves. Active average off-peak prices were for the most part lower and averaged **\$13.49/MWh**, **\$0.30/MWh** and **\$0.33/MWh** for active **regulating**, **spinning** and **supplemental** reserves respectively.



Weekly average activation prices for stand-by reserves ranged from **\$29.14/MWh** for **off-peak supplemental** reserves to **\$72.96/MWh** for **on-peak spinning** reserves. Weekly average premium prices ranged from **\$2.25/MWh** for **off-peak supplemental** reserves up to **\$2.48/MWh** for **on-peak regulating** reserves.

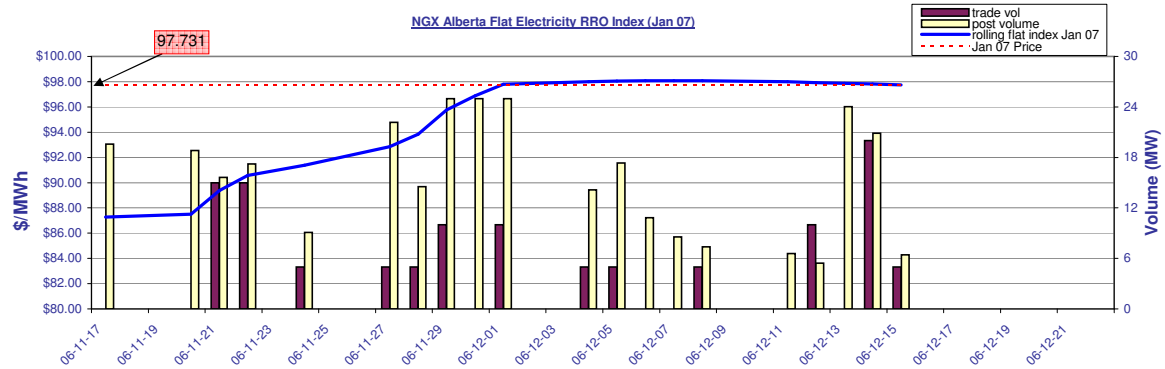
AS Market Shares by Fuel Type



Last week **hydro** units had the largest market share in the **active regulating** reserve market with **69.4%**. In the **active spinning** reserve market, **gas-cogen** units had the leading market share with **33.3%** while in the **active supplemental** reserve market, **hydro** units dominated with a **49.2%** market share.

Coal units dominated the **standby regulating** reserve market with a **93.1%** market share. Leading market share in the **standby spinning** market was held by **coal** units with a **56.9%** market share. In the **standby supplemental** reserve market, **gas** units had the leading market share with **54.0%**.

RRO Procurement



Glossary

- On-Peak Hours**
In Alberta: HE08 through HE23, Monday through Saturday (prevailing Mountain time)
In Mid-C: HE07 through HE22, Monday through Saturday (prevailing Pacific time)
In Minn Hub: HE08 through HE23, Monday through Sunday (prevailing Central time)
- Off-Peak Hours**
In Alberta: HE01 through HE07 + HE24 (of the same day), Monday through Saturday + HE01 through HE24 Sundays + holidays (prevailing Mountain time)
In Mid-C: HE24 (of the previous day) through HE07 (of the day in question), Monday through Saturday + HE01 through HE24 Sundays + holidays (prevailing Pacific time)
In Minn Hub: HE24 (of the previous day) through HE07 (of the day in question), Monday through Sunday (prevailing Central time)
- ATC**
A measure of the maximum energy flow possible in one direction across an intertie.
- Market Heat Rate**
The prevailing Pool price divided by the prevailing gas price.
- Sparks spread**
Sparks spreads give an indication of the revenue available to cover costs after fuel costs have been paid. A positive spread indicates it is more economical to buy gas and generate electricity while a negative spread indicates it is more economical to buy electricity from the grid.