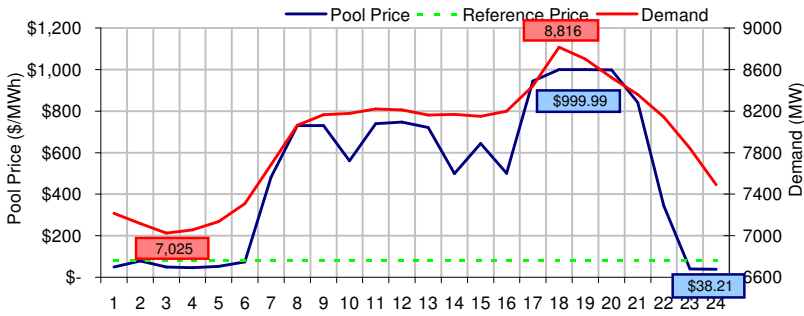
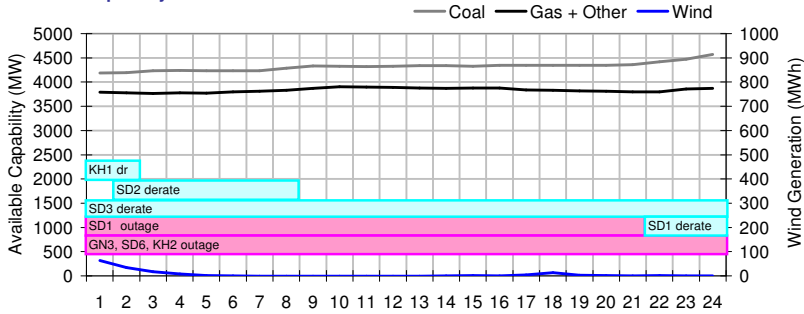


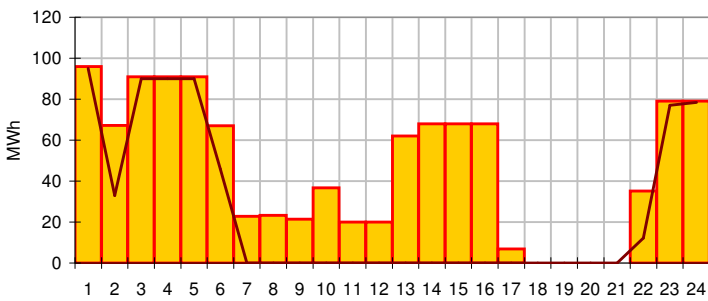
**Pool Price and Demand**



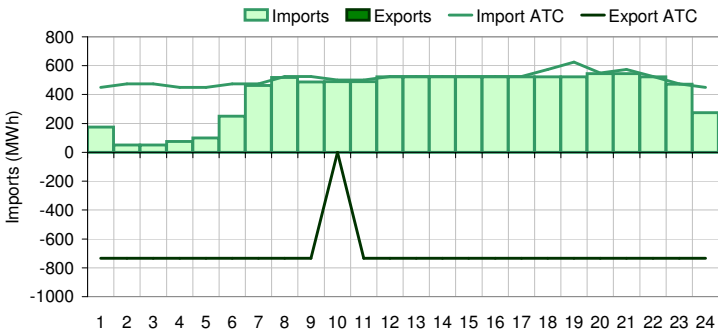
**Available Capacity**



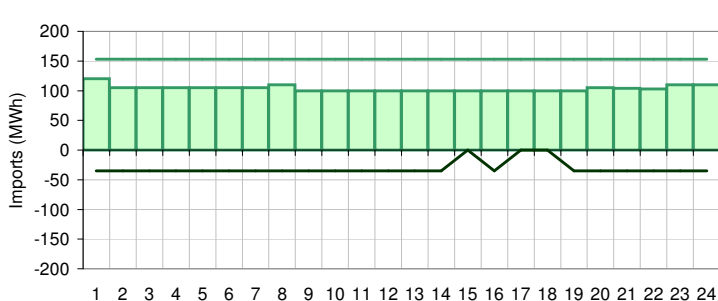
**Dispatched TMR and DDS**



**BC Intertie**



**SK Intertie**



**Pool Price (\$/MWh)**

	Today	This day last week	30 day rolling average	Year to date
average	\$ 496.23	\$ 62.20	\$ 132.52	\$ 92.57
on peak	\$ 690.00	\$ 78.36	\$ 183.28	\$ 122.78
off peak	\$ 108.70	\$ 29.87	\$ 54.66	\$ 47.62

**Gas price**

	Today	This day last week	30 day rolling average	Year to date
AECO-C (\$/GJ)	\$ 5.73	\$ 6.76	\$ 6.29	\$ 7.97
Heat rate (GJ/MWh)	86.59	9.20	21.08	11.61

**Demand (MWh)**

	Today	This day last week	30 day rolling average	Year to date
average	7932	8035	7765	7901
on peak	8272	8376	8127	8304
off peak	7254	7355	7200	7366

**Coal**

	Today	This day last week	30 day rolling average	Year to date
average AC/MC (%)	72.0%	82.8%	78.4%	84.3%
maximum AC/MC (%)	76.1%	83.6%	81.8%	
minimum AC/MC (%)	69.7%	80.2%	73.9%	

**Gas + Other**

	Today	This day last week	30 day rolling average	Year to date
average AC/MC (%)	78.8%	70.6%	68.8%	72.9%
maximum AC/MC (%)	80.2%	73.6%	71.6%	
minimum AC/MC (%)	77.4%	65.9%	64.6%	

**Wind Generation (MWh)**

	Today	This day last week
average	6	288
minimum	0	199
maximum	63	380

**Transmission Must Run (MWh)**

	Today	This day last week
average	46	115
minimum	0	101
maximum	96	121

**Dispatch Down Service (MWh)**

	Today	This day last week
average	25	76
minimum	0	0
maximum	95	120

**Intertie**

	Today	This day last week	30 day rolling average	Year to date
Mid-C On-Peak	\$ 60.65	\$ 60.13	\$ 52.41	\$ 66.70
Mid-C Off-Peak	\$ 51.77	\$ 50.67	\$ 43.71	\$ 51.75
Minn Hub On-Peak	\$ 50.61	\$ 69.47	\$ 44.63	\$ 63.67
Minn Hub Off-Peak	\$ 18.87	\$ 28.15	\$ 15.59	\$ 24.31
Exchange rate (US:CDN)	1.19781	1.28298		

	Today	This day last week	30 day rolling average	Year to date
BC Import % of ATC	79.2%	59.8%	56.1%	36.9%
SK Import % of ATC	67.9%	0.0%	61.0%	52.5%
BC Export % of ATC	0.0%	29.0%	9.7%	19.6%
SK Export % of ATC	0.0%	0.0%	2.4%	14.4%

**Summary of Average Pool Price and Gas price**

