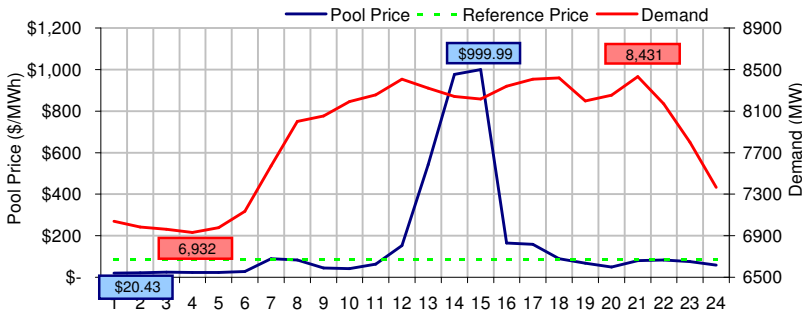
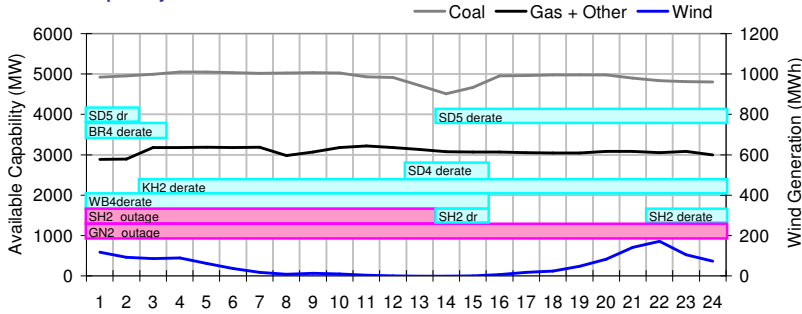


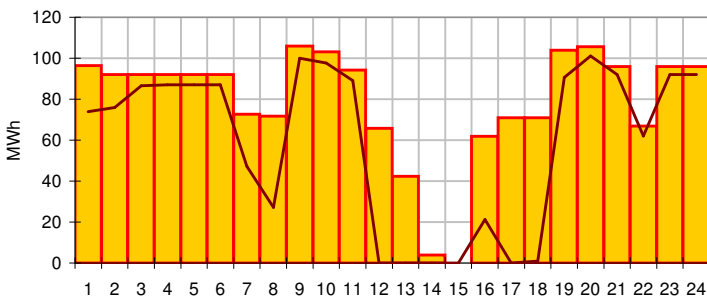
### Pool Price and Demand



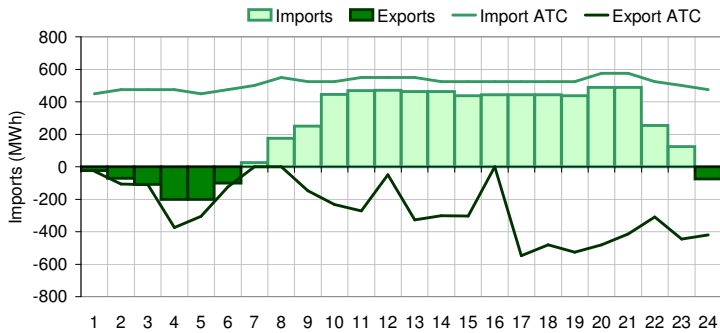
### Available Capacity



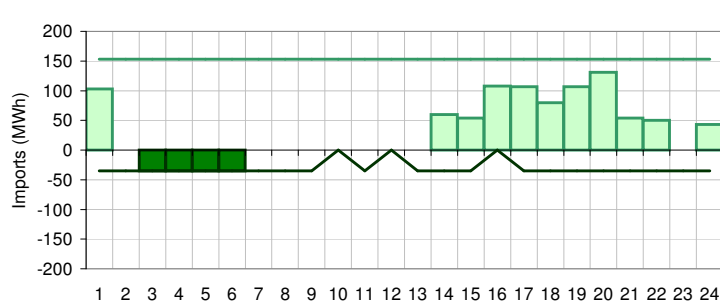
### Dispatched TMR and DDS



### BC Intertie



### SK Intertie



### Pool Price (\$/MWh)

	Today	This day last week	30 day rolling average	Year to date
average	\$ 165.15	\$ 63.53	\$ 93.86	\$ 88.19
on peak	\$ 229.64	\$ 84.41	\$ 135.29	\$ 115.65
off peak	\$ 36.17	\$ 21.77	\$ 33.04	\$ 47.06

### Gas price

	Today	This day last week	30 day rolling average	Year to date
AECO-C (\$/GJ)	\$ 5.80	\$ 5.86	\$ 5.85	\$ 8.19
Heat rate (GJ/MWh)	28.48	10.84	16.03	10.77

### Demand (MWh)

	Today	This day last week	30 day rolling average	Year to date
average	7861	7677	7670	7921
on peak	8231	8032	8039	8314
off peak	7121	6968	7083	7377

### Coal

	Today	This day last week	30 day rolling average	Year to date
average AC/MC (%)	81.9%	83.3%	86.0%	85.0%
maximum AC/MC (%)	84.0%	84.5%	89.9%	
minimum AC/MC (%)	75.1%	80.9%	81.2%	

### Gas + Other

	Today	This day last week	30 day rolling average	Year to date
average AC/MC (%)	63.5%	65.1%	68.1%	73.5%
maximum AC/MC (%)	66.2%	69.0%	70.5%	
minimum AC/MC (%)	59.4%	59.3%	64.3%	

### Wind Generation (MWh)

	Today	This day last week
average	50	153
minimum	0	22
maximum	172	301

### Transmission Must Run (MWh)

	Today	This day last week
average	79	104
minimum	0	73
maximum	106	129

### Dispatch Down Service (MWh)

	Today	This day last week
average	59	60
minimum	0	0
maximum	101	109

### Intertie

	Today	This day last week	30 day rolling average	Year to date
Mid-C On-Peak	\$ 63.45	\$ 59.58	\$ 59.58	\$ 68.46
Mid-C Off-Peak	\$ 47.50	\$ 45.94	\$ 49.01	\$ 52.76
Minn Hub On-Peak	\$ 48.28	\$ 59.70	\$ 49.95	\$ 66.18
Minn Hub Off-Peak	\$ 15.83	\$ 17.65	\$ 12.72	\$ 25.41
Exchange rate (US:CDN)	1.03824	1.04443		

	Today	This day last week	30 day rolling average	Year to date
BC Import % of ATC	51.2%	19.7%	19.3%	34.8%
SK Import % of ATC	24.4%	14.9%	23.4%	51.6%
BC Export % of ATC	0.0%	24.8%	21.0%	20.8%
SK Export % of ATC	19.0%	41.7%	32.2%	15.9%

### Summary of Average Pool Price and Gas price

