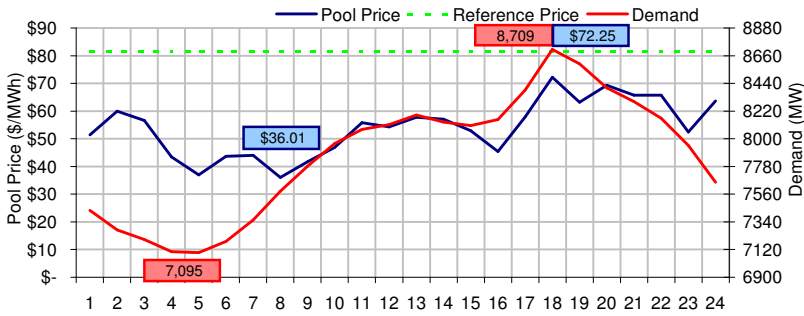
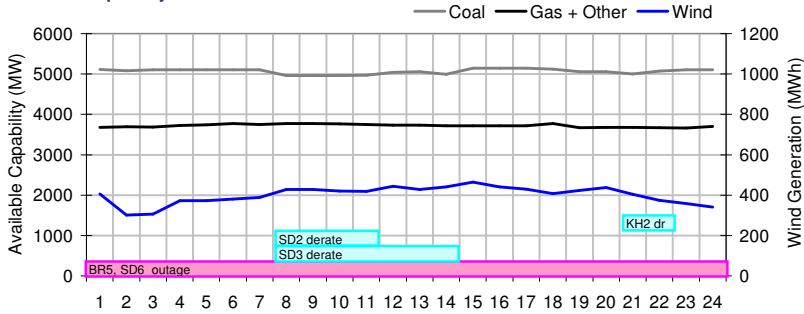


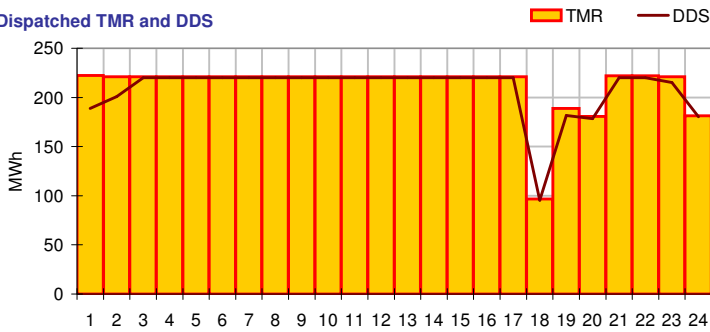
**Pool Price and Demand**



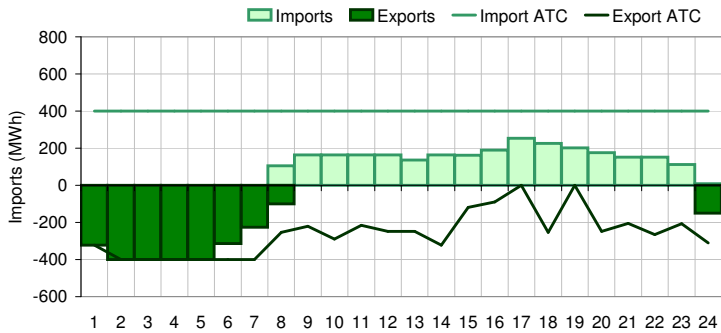
**Available Capacity**



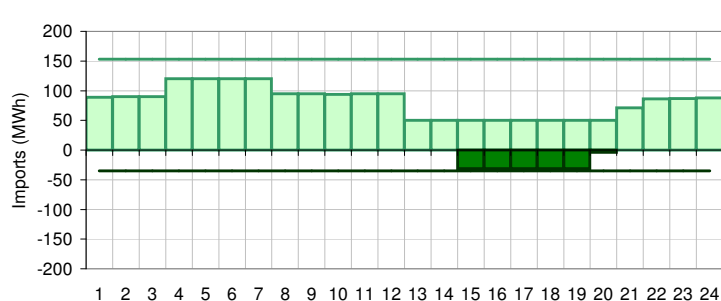
**Dispatched TMR and DDS**



**BC Intertie**



**SK Intertie**



**Pool Price (\$/MWh)**

	Today	This day last week	30 day rolling average	Year to date
average	\$ 53.93	\$ 71.25	\$ 100.03	\$ 90.94
on peak	\$ 55.91	\$ 80.07	\$ 122.94	\$ 119.77
off peak	\$ 49.96	\$ 53.61	\$ 55.47	\$ 47.66

**Gas price**

	Today	This day last week	30 day rolling average	Year to date
AECO-C (\$/GJ)	\$ 7.06	\$ 6.53	\$ 6.39	\$ 7.89
Heat rate (GJ/MWh)	7.63	10.91	15.65	11.53

**Demand (MWh)**

	Today	This day last week	30 day rolling average	Year to date
average	7871	7784	7959	7908
on peak	8162	8048	8350	8307
off peak	7288	7258	7362	7367

**Coal**

	Today	This day last week	30 day rolling average	Year to date
average AC/MC (%)	84.3%	76.0%	80.0%	84.1%
maximum AC/MC (%)	85.5%	77.6%		
minimum AC/MC (%)	82.5%	73.7%		

**Gas + Other**

	Today	This day last week	30 day rolling average	Year to date
average AC/MC (%)	72.7%	76.4%	71.8%	68.8%
maximum AC/MC (%)	73.8%	78.1%		
minimum AC/MC (%)	71.6%	72.2%		

**Wind Generation (MWh)**

	Today	This day last week
average	401	335
minimum	301	111
maximum	465	451

**Transmission Must Run (MWh)**

	Today	This day last week
average	211	105
minimum	97	65
maximum	222	125

**Dispatch Down Service (MWh)**

	Today	This day last week
average	208	89
minimum	95	0
maximum	220	113

**Intertie**

	Today	This day last week	30 day rolling average	Year to date
Mid-C On-Peak	\$ 60.95	\$ 59.31	\$ 50.12	\$ 65.68
Mid-C Off-Peak	\$ 56.28	\$ 47.22	\$ 44.22	\$ 51.29
Minn Hub On-Peak	\$ 55.63	\$ 47.91	\$ 46.69	\$ 62.74
Minn Hub Off-Peak	\$ 22.83	\$ 20.58	\$ 20.31	\$ 24.18
Exchange rate (US:CDN)	1.28617	1.21908		

	Today	This day last week	30 day rolling average	Year to date
BC Import % of ATC	28.0%	24.0%	49.0%	37.2%
SK Import % of ATC	53.2%	46.2%	63.6%	52.8%
BC Export % of ATC	0.0%	7.4%	11.3%	19.2%
SK Export % of ATC	18.9%	0.0%	0.6%	13.7%

**Summary of Average Pool Price and Gas price**

