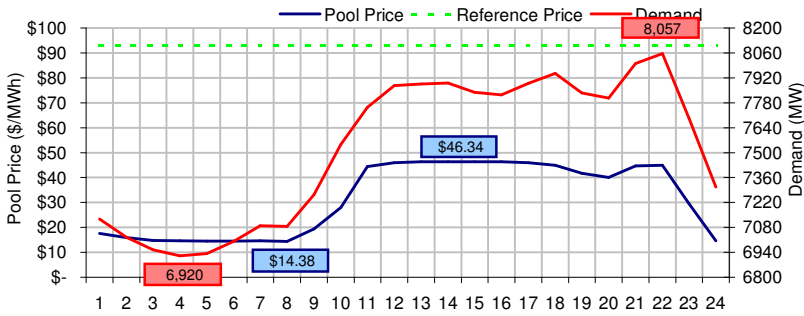
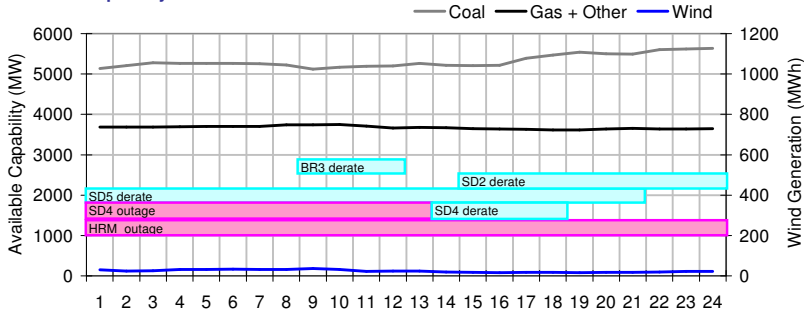


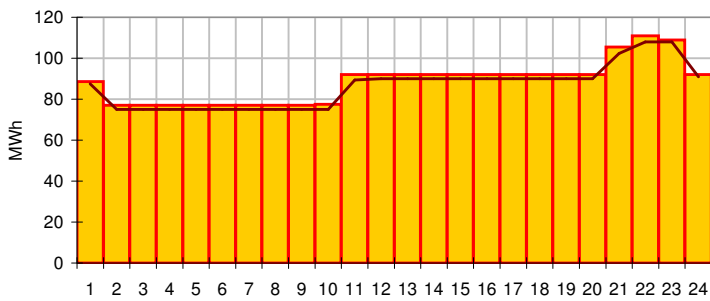
Pool Price and Demand



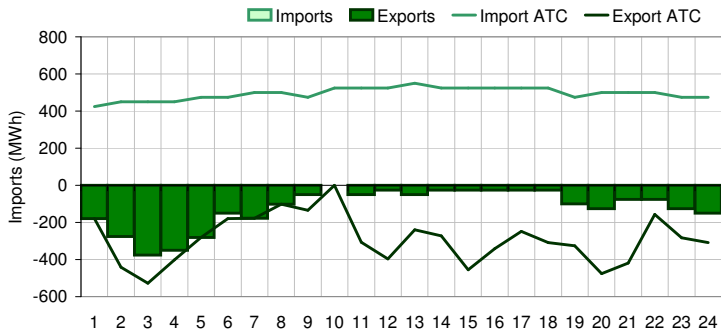
Available Capacity



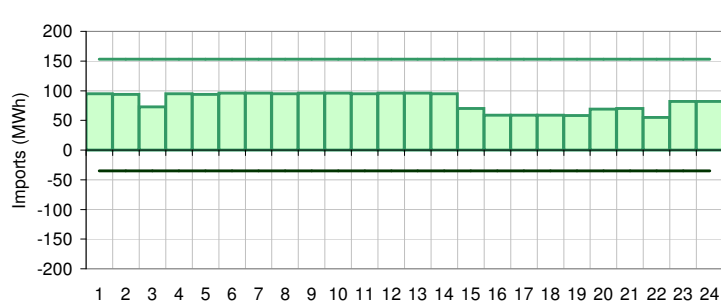
Dispatched TMR and DDS



BC Intertie



SK Intertie



Pool Price (\$/MWh)

	Today	This day last week	30 day rolling average	Year to date
average	\$ 31.27	\$ 58.48	\$ 82.47	\$ 87.27
on peak	\$ 39.34	\$ 66.35	\$ 113.31	\$ 112.85
off peak	\$ 15.14	\$ 42.73	\$ 37.98	\$ 48.67

Gas price

	Today	This day last week	30 day rolling average	Year to date
AECO-C (\$/GJ)	\$ 6.37	\$ 6.44	\$ 6.98	\$ 8.47
Heat rate (GJ/MWh)	4.91	9.08	11.81	10.30

Demand (MWh)

	Today	This day last week	30 day rolling average	Year to date
average	7523	8129	7970	7951
on peak	7762	8550	8393	8327
off peak	7045	7286	7375	7391

Coal

	Today	This day last week	30 day rolling average	Year to date
average AC/MC (%)	88.6%	84.3%	84.7%	84.9%
maximum AC/MC (%)	93.8%	85.9%	87.4%	
minimum AC/MC (%)	85.3%	82.0%	81.3%	

Gas + Other

	Today	This day last week	30 day rolling average	Year to date
average AC/MC (%)	75.5%	73.8%	75.6%	74.2%
maximum AC/MC (%)	77.0%	78.4%	78.1%	
minimum AC/MC (%)	74.3%	66.4%	71.7%	

Wind Generation (MWh)

	Today	This day last week
average	24	241
minimum	16	129
maximum	36	357

Transmission Must Run (MWh)

	Today	This day last week
average	88	89
minimum	77	75
maximum	111	96

Dispatch Down Service (MWh)

	Today	This day last week
average	86	75
minimum	75	53
maximum	108	96

Intertie

	Today	This day last week	30 day rolling average	Year to date
Mid-C On-Peak	\$ 68.05	\$ 73.41	\$ 72.01	\$ 69.54
Mid-C Off-Peak	\$ 51.21	\$ 61.37	\$ 59.23	\$ 53.23
Minn Hub On-Peak	\$ 78.23	\$ 67.32	\$ 65.14	\$ 68.26
Minn Hub Off-Peak	\$ 6.39	\$ 11.71	\$ 16.07	\$ 26.90
Exchange rate (US:CDN)	1.06440	1.04762		

	Today	This day last week	30 day rolling average	Year to date
BC Import % of ATC	0.0%	21.7%	18.8%	36.3%
SK Import % of ATC	53.8%	49.0%	68.7%	55.2%
BC Export % of ATC	0.0%	44.4%	36.0%	20.9%
SK Export % of ATC	0.0%	0.0%	0.0%	13.8%

Summary of Average Pool Price and Gas price

