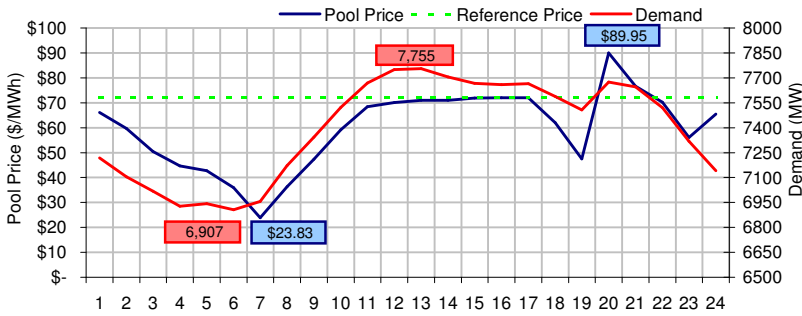
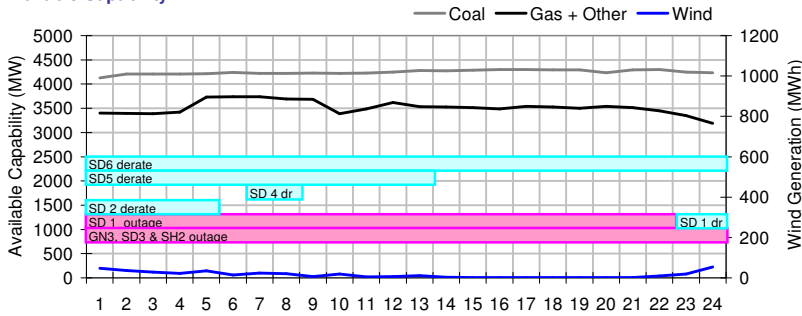


Sunday, October 12, 2008

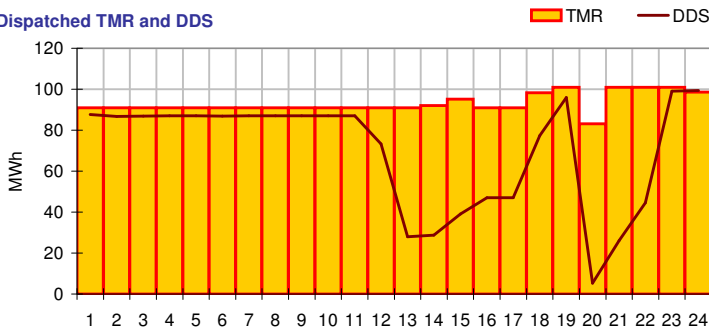
Pool Price and Demand



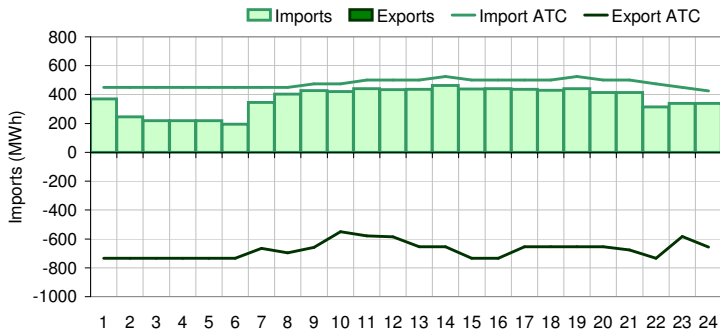
Available Capacity



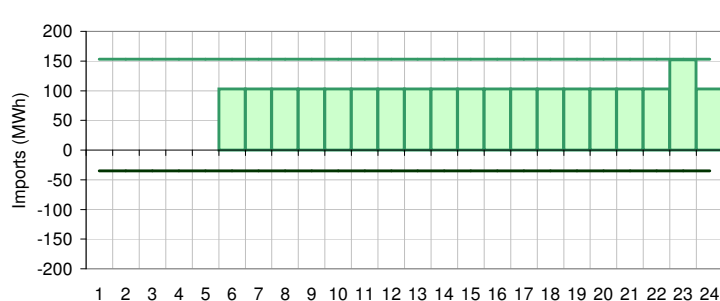
Dispatched TMR and DDS



BC Intertie



SK Intertie



Pool Price (\$/MWh)

	Today	This day last week	30 day rolling average	Year to date
average	\$ 59.61	\$ 25.23	\$ 116.53	\$ 89.55
on peak	NA	NA	\$ 169.93	\$ 118.45
off peak	\$ 59.61	\$ 25.23	\$ 39.49	\$ 46.75

Gas price

	Today	This day last week	30 day rolling average	Year to date
AECO-C (\$/GJ)	\$ 5.95	\$ 5.90	\$ 5.88	\$ 8.10
Heat rate (GJ/MWh)	10.03	4.28	19.83	11.05

Demand (MWh)

	Today	This day last week	30 day rolling average	Year to date
average	7391	7328	7642	7909
on peak	NA	NA	8017	8309
off peak	7391	7328	7081	7371

Coal

	Today	This day last week	30 day rolling average	Year to date
average AC/MC (%)	70.7%	86.6%	82.2%	84.8%
maximum AC/MC (%)	71.6%	88.2%	85.6%	
minimum AC/MC (%)	68.8%	82.7%	77.6%	

Gas + Other

	Today	This day last week	30 day rolling average	Year to date
average AC/MC (%)	72.3%	59.3%	65.9%	73.2%
maximum AC/MC (%)	76.8%	60.8%	68.4%	
minimum AC/MC (%)	65.6%	57.5%	62.0%	

Wind Generation (MWh)

	Today	This day last week	30 day rolling average	Year to date
average	16	351		
minimum	2	260		
maximum	54	392		

Transmission Must Run (MWh)

	Today	This day last week	30 day rolling average	Year to date
average	93	100		
minimum	83	85		
maximum	101	111		

Dispatch Down Service (MWh)

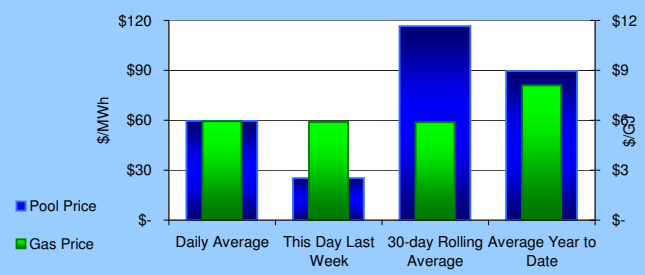
	Today	This day last week	30 day rolling average	Year to date
average	69	35		
minimum	5	20		
maximum	99	74		

Intertie

	Today	This day last week	30 day rolling average	Year to date
Mid-C On-Peak	NA	NA	\$ 57.88	\$ 67.94
Mid-C Off-Peak	\$ 52.05	\$ 56.35	\$ 47.44	\$ 52.41
Minn Hub On-Peak	\$ 37.29	\$ 46.98	\$ 46.34	\$ 65.09
Minn Hub Off-Peak	\$ 8.22	\$ 15.86	\$ 13.95	\$ 24.88
Exchange rate (US:CDN)	1.17460	1.08313		

BC Import % of ATC	77.3%	2.7%	36.6%	35.2%
SK Import % of ATC	54.6%	42.5%	29.9%	51.3%
BC Export % of ATC	0.0%	29.8%	20.6%	20.6%
SK Export % of ATC	0.0%	0.0%	28.0%	15.5%

Summary of Average Pool Price and Gas price



Alberta's Market Surveillance Administrator (MSA) is in place to monitor Alberta's electricity and retail natural gas markets for fairness and balance in the public interest. The Market Surveillance Administrator keeps a close watch on the overall performance of Alberta's electricity and retail natural gas markets ensuring that they continue to operate in a fair, efficient and openly competitive manner.

In our efforts to keep you regularly informed on key market indicators in Alberta's evolving electricity market, we prepare and publish a Daily Snapshot each business day. The Daily Snapshot complements our other regular publications, the weekly Market Monitor and Quarterly Reports.

Any questions regarding the material in this publication should be directed to MSA staff. Our contact information is available on the MSA website: www.albertamsa.ca