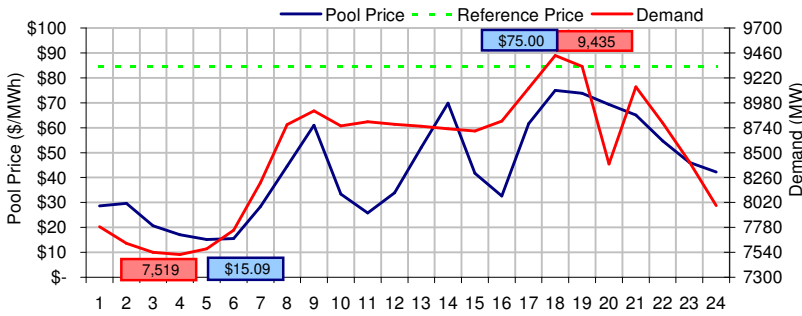
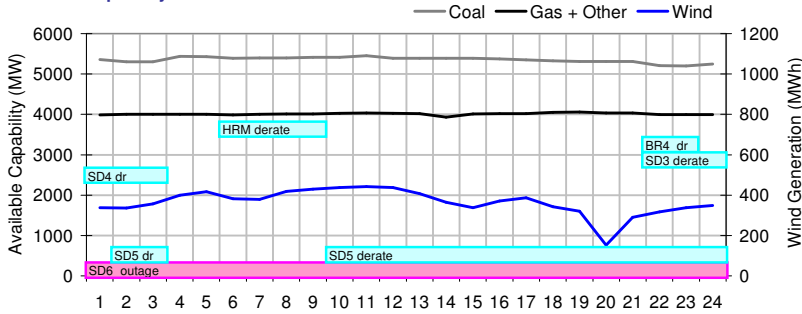


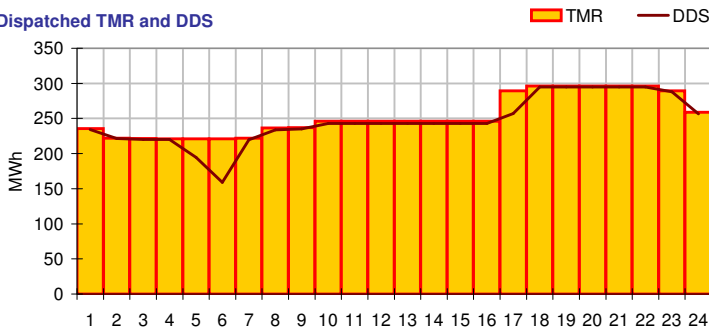
### Pool Price and Demand



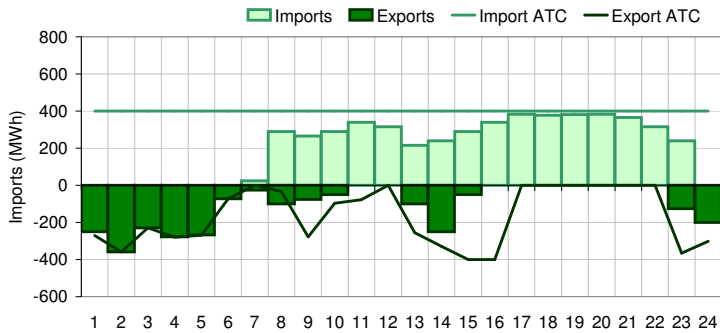
### Available Capacity



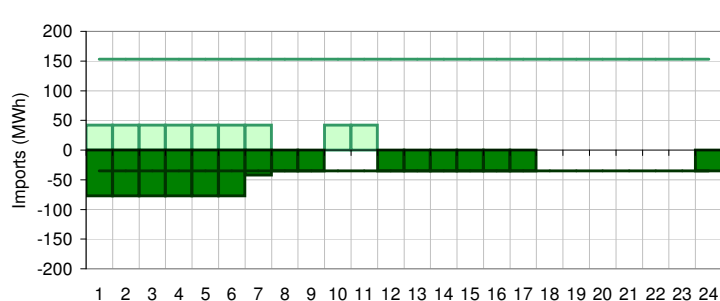
### Dispatched TMR and DDS



### BC Intertie



### SK Intertie



### Pool Price (\$/MWh)

	Today	This day last week	30 day rolling average	Year to date
average	\$ 43.23	\$ 106.79	\$ 63.00	\$ 89.40
on peak	\$ 52.51	\$ 137.60	\$ 72.52	\$ 117.43
off peak	\$ 24.67	\$ 45.16	\$ 43.70	\$ 47.36

### Gas price

	Today	This day last week	30 day rolling average	Year to date
AECO-C (\$/GJ)	\$ 6.18	\$ 6.77	\$ 6.56	\$ 7.82
Heat rate (GJ/MWh)	7.00	15.77	9.60	11.43

### Demand (MWh)

	Today	This day last week	30 day rolling average	Year to date
average	8484	8453	8174	7925
on peak	8850	8855	8589	8316
off peak	7751	7650	7536	7373

### Coal

	Today	This day last week	30 day rolling average	Year to date
average AC/MC (%)	89.1%	86.3%	85.2%	84.2%
maximum AC/MC (%)	90.8%	88.4%		
minimum AC/MC (%)	86.5%	84.3%		

### Gas + Other

	Today	This day last week	30 day rolling average	Year to date
average AC/MC (%)	78.8%	76.5%	75.2%	69.1%
maximum AC/MC (%)	79.7%	77.7%		
minimum AC/MC (%)	77.2%	75.4%		

### Wind Generation (MWh)

	Today	This day last week
average	365	22
minimum	152	3
maximum	442	38

### Transmission Must Run (MWh)

	Today	This day last week
average	253	178
minimum	221	2
maximum	296	222

### Dispatch Down Service (MWh)

	Today	This day last week
average	246	189
minimum	159	0
maximum	295	270

### Intertie

	Today	This day last week	30 day rolling average	Year to date
Mid-C On-Peak	\$ 62.04	\$ 61.16	\$ 48.28	\$ 64.81
Mid-C Off-Peak	\$ 53.40	\$ 50.30	\$ 43.88	\$ 50.93
Minn Hub On-Peak	\$ 74.48	\$ 52.48	\$ 49.58	\$ 62.07
Minn Hub Off-Peak	\$ 45.26	\$ 30.49	\$ 23.66	\$ 24.15
Exchange rate (US:CDN)	1.25712	1.24591		

	Today	This day last week	30 day rolling average	Year to date
BC Import % of ATC	52.6%	54.4%	40.8%	37.5%
SK Import % of ATC	10.3%	73.9%	49.7%	52.3%
BC Export % of ATC	0.0%	12.9%	22.7%	19.8%
SK Export % of ATC	97.5%	0.0%	8.8%	14.0%

### Summary of Average Pool Price and Gas price

