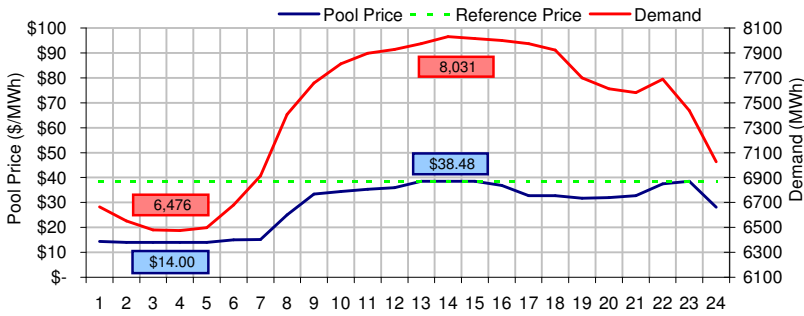
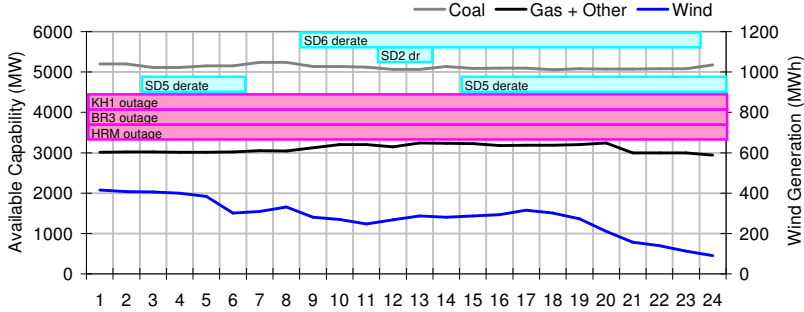


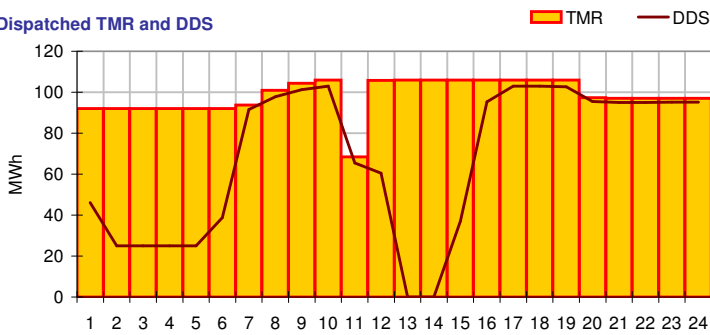
Pool Price and Demand



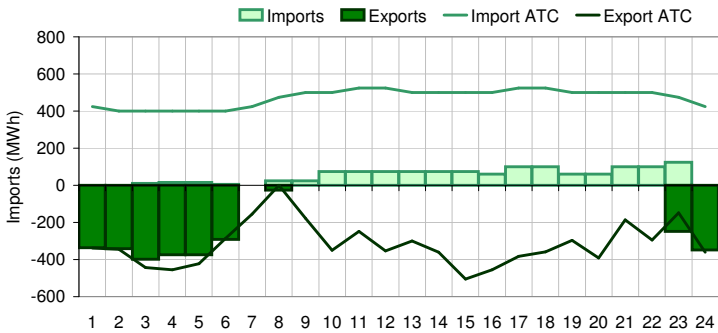
Available Capacity



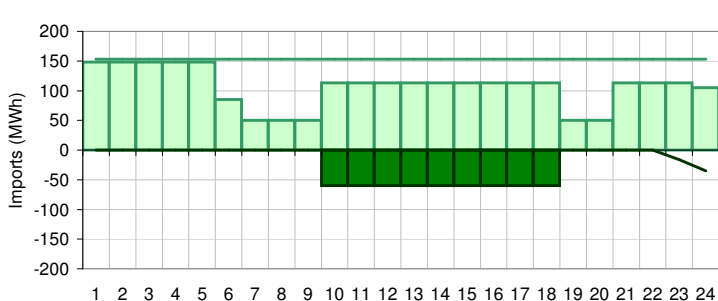
Dispatched TMR and DDS



BC Intertie



SK Intertie



Pool Price (\$/MWh)

	Today	This day last week	30 day rolling average	Year to date
average	\$ 28.46	\$ 27.71	\$ 28.27	\$ 54.46
on peak	\$ 34.65	\$ 32.57	\$ 34.40	\$ 65.34
off peak	\$ 16.08	\$ 17.99	\$ 20.45	\$ 39.92

Gas price

	Today	This day last week	30 day rolling average	Year to date
AECO-C (\$/GJ)	\$ 3.24	\$ 3.01	\$ 3.29	\$ 4.30
Heat rate (GJ/MWh)	8.78	9.20	8.59	12.66

Demand (MWh)

	Today	This day last week	30 day rolling average	Year to date
average	7414	7772	7545	8125
on peak	7790	8120	7891	8470
off peak	6662	7077	7059	7618

Coal

	Today	This day last week	30 day rolling average	Year to date
average AC/MC (%)	85.2%	84.2%	85.2%	83.1%
maximum AC/MC (%)	87.2%	89.6%		
minimum AC/MC (%)	84.1%	81.1%		

Gas + Other

	Today	This day last week	30 day rolling average	Year to date
average AC/MC (%)	59.5%	65.7%	63.3%	70.2%
maximum AC/MC (%)	62.1%	69.4%		
minimum AC/MC (%)	56.4%	58.8%		

Wind Generation (MWh)

	Today	This day last week
average	282	202
minimum	91	136
maximum	416	298

Transmission Must Run (MWh)

	Today	This day last week
average	98	104
minimum	68	92
maximum	106	151

Dispatch Down Service (MWh)

	Today	This day last week
average	68	103
minimum	0	89
maximum	103	158

Intertie

	Today	This day last week	30 day rolling average	Year to date
Mid-C On-Peak	\$ 30.04	\$ 23.62	\$ 22.25	\$ 32.56
Mid-C Off-Peak	\$ 24.03	\$ 9.11	\$ 16.93	\$ 28.84
Minn Hub On-Peak	\$ 29.65	\$ 37.95	\$ 26.32	\$ 34.56
Minn Hub Off-Peak	\$ 10.38	\$ 10.97	\$ 10.71	\$ 18.57
Exchange rate (US:CDN)	1.18596	1.21014		

	Today	This day last week	30 day rolling average	Year to date
BC Import % of ATC	11.0%	51.1%	23.4%	40.5%
SK Import % of ATC	69.1%	29.9%	43.3%	42.9%
BC Export % of ATC	36.0%	0.9%	11.1%	15.9%
SK Export % of ATC	1058.8%	0.0%	9.9%	19.4%

Summary of Average Pool Price and Gas price

