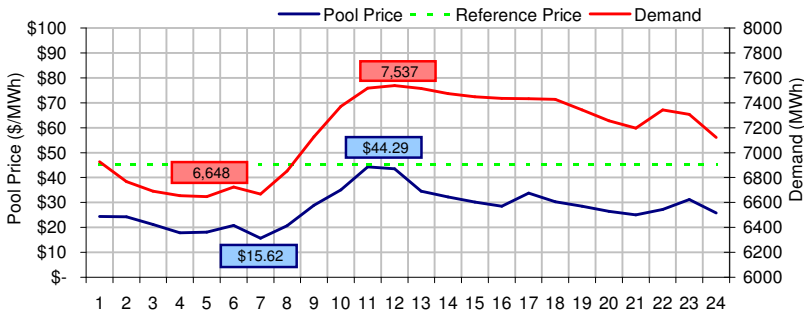
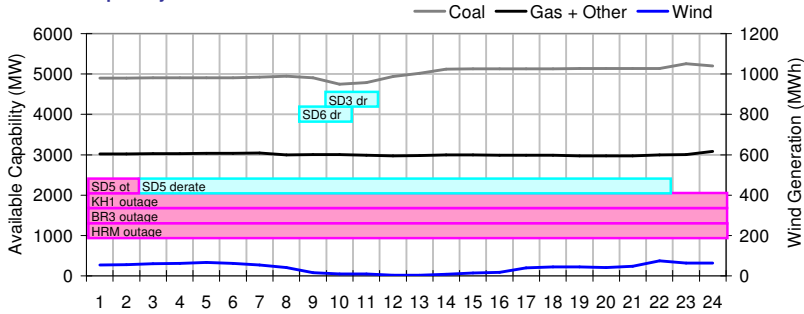


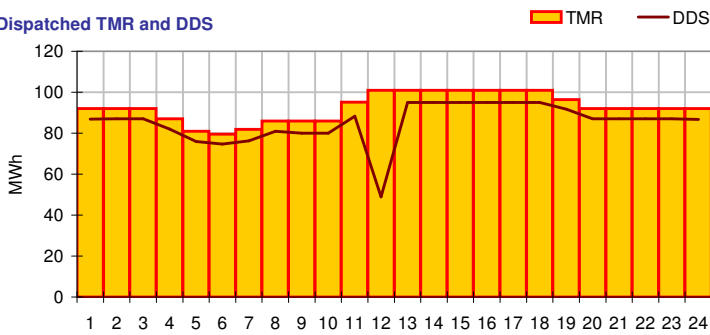
### Pool Price and Demand



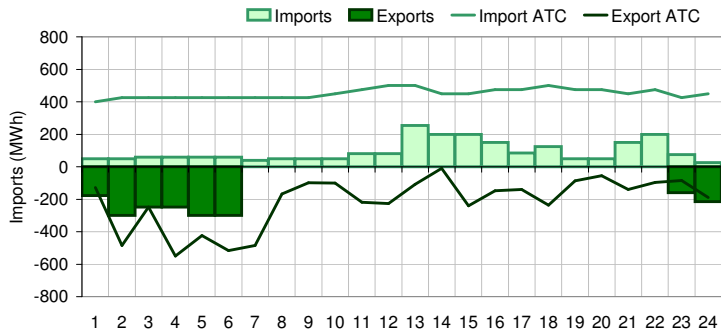
### Available Capacity



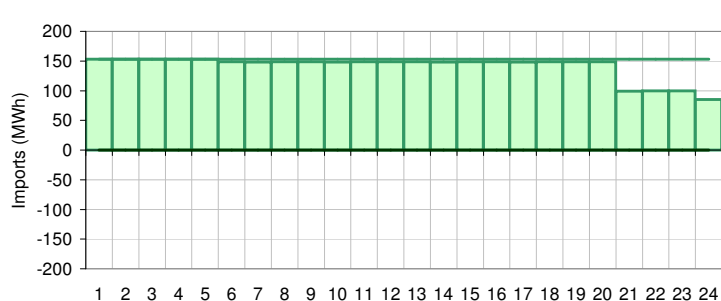
### Dispatched TMR and DDS



### BC Intertie



### SK Intertie



### Pool Price (\$/MWh)

	Today	This day last week	30 day rolling average	Year to date
average	\$ 27.83	\$ 23.04	\$ 29.26	\$ 54.96
on peak	\$ 31.26	\$ 27.88	\$ 37.98	\$ 65.64
off peak	\$ 20.99	\$ 13.36	\$ 20.92	\$ 40.28

### Gas price

	Today	This day last week	30 day rolling average	Year to date
AECO-C (\$/GJ)	\$ 3.26	\$ 2.99	\$ 3.32	\$ 4.32
Heat rate (GJ/MWh)	8.54	7.70	8.81	12.72

### Demand (MWh)

	Today	This day last week	30 day rolling average	Year to date
average	7158	7406	7584	8140
on peak	7349	7604	7908	8477
off peak	6775	7011	7093	7630

### Coal

	Today	This day last week	30 day rolling average	Year to date
average AC/MC (%)	83.4%	87.9%	85.2%	83.1%
maximum AC/MC (%)	87.4%	89.8%		
minimum AC/MC (%)	78.9%	86.2%		

### Gas + Other

	Today	This day last week	30 day rolling average	Year to date
average AC/MC (%)	57.6%	58.9%	63.5%	70.4%
maximum AC/MC (%)	59.1%	60.7%		
minimum AC/MC (%)	56.9%	57.9%		

### Wind Generation (MWh)

	Today	This day last week
average	40	193
minimum	3	9
maximum	74	381

### Transmission Must Run (MWh)

	Today	This day last week
average	93	88
minimum	80	77
maximum	101	92

### Dispatch Down Service (MWh)

	Today	This day last week
average	85	86
minimum	49	75
maximum	95	90

### Intertie

	Today	This day last week	30 day rolling average	Year to date
Mid-C On-Peak	\$ 26.94	\$ 16.57	\$ 22.61	\$ 32.63
Mid-C Off-Peak	\$ 23.14	\$ 2.55	\$ 17.37	\$ 28.98
Minn Hub On-Peak	\$ 24.10	\$ 32.43	\$ 26.88	\$ 34.76
Minn Hub Off-Peak	\$ 8.03	\$ 7.44	\$ 11.33	\$ 18.75
Exchange rate (US:CDN)	1.19025	1.21935		

### BC Import % of ATC

	Today	This day last week	30 day rolling average	Year to date
BC Import % of ATC	20.8%	57.5%	25.1%	41.0%
SK Import % of ATC	92.0%	23.3%	38.9%	42.4%
BC Export % of ATC	37.5%	0.0%	8.4%	15.5%
SK Export % of ATC	0.0%	0.0%	16.3%	11.1%

### Summary of Average Pool Price and Gas price

