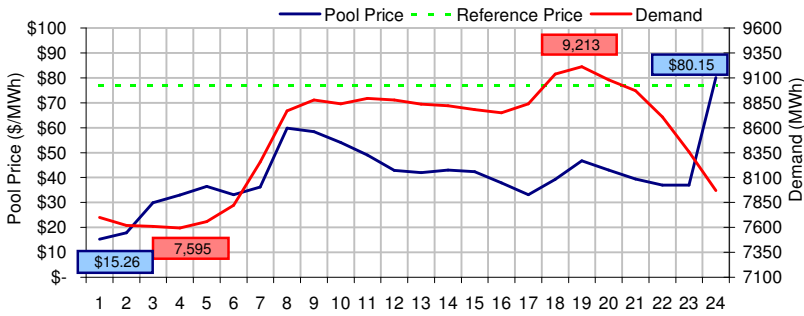
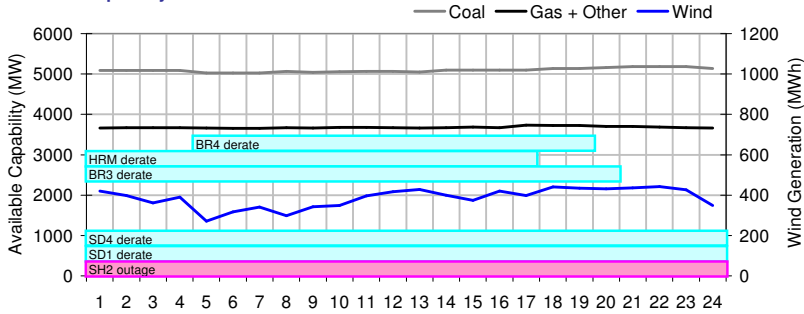


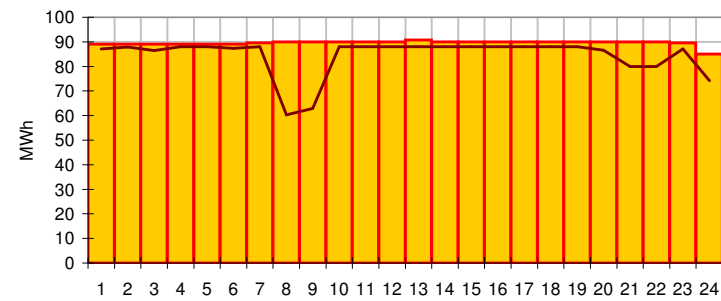
Pool Price and Demand



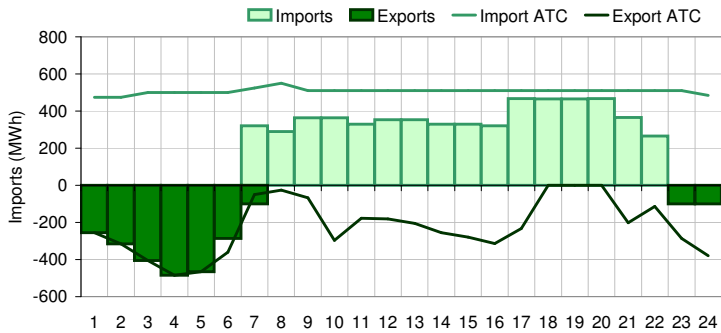
Available Capacity



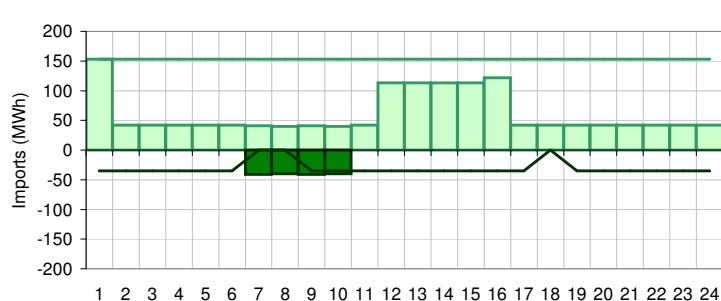
Dispatched TMR and DDS



BC Intertie



SK Intertie



Pool Price (\$/MWh)

	Today	This day last week	30 day rolling average	Year to date
average	\$ 41.11	\$ 79.05	\$ 93.91	\$ 89.84
on peak	\$ 44.04	\$ 71.69	\$ 118.62	\$ 113.88
off peak	\$ 35.25	\$ 93.76	\$ 61.44	\$ 59.74

Gas price

	Today	This day last week	30 day rolling average	Year to date
AECO-C (\$/GJ)	\$ 4.69	\$ 5.01	\$ 5.36	\$ 5.45
Heat rate (GJ/MWh)	8.76	15.78	17.53	16.48

Demand (MWh)

	Today	This day last week	30 day rolling average	Year to date
average	8499	8878	8435	8435
on peak	8859	9215	8826	8811
off peak	7779	8204	7865	7870

Coal

	Today	This day last week	30 day rolling average	Year to date
average AC/MC (%)	84.8%	81.0%	80.5%	81.1%
maximum AC/MC (%)	86.2%	82.1%		
minimum AC/MC (%)	83.7%	78.3%		

Gas + Other

	Today	This day last week	30 day rolling average	Year to date
average AC/MC (%)	70.5%	76.2%	73.6%	73.2%
maximum AC/MC (%)	71.6%	80.0%		
minimum AC/MC (%)	70.1%	69.9%		

Wind Generation (MWh)

	Today	This day last week
average	387	195
minimum	271	13
maximum	443	472

Transmission Must Run (MWh)

	Today	This day last week
average	90	99
minimum	85	85
maximum	91	123

Dispatch Down Service (MWh)

	Today	This day last week
average	84	84
minimum	60	0
maximum	88	116

Intertie

	Today	This day last week	30 day rolling average	Year to date
Mid-C On-Peak	\$ 52.07	\$ 48.78	\$ 39.35	\$ 39.69
Mid-C Off-Peak	\$ 46.97	\$ 41.97	\$ 34.96	\$ 35.60
Minn Hub On-Peak	\$ 60.27	\$ 66.11	\$ 50.31	\$ 49.82
Minn Hub Off-Peak	\$ 42.74	\$ 38.75	\$ 30.09	\$ 29.69
Exchange rate (US:CDN)	1.23003	1.23183		

	Today	This day last week	30 day rolling average	Year to date
BC Import % of ATC	48.1%	77.7%	53.2%	51.8%
SK Import % of ATC	40.2%	70.2%	50.2%	50.0%
BC Export % of ATC	0.0%	0.0%	22.7%	23.7%
SK Export % of ATC	22.0%	0.0%	5.7%	6.8%

Summary of Average Pool Price and Gas price

