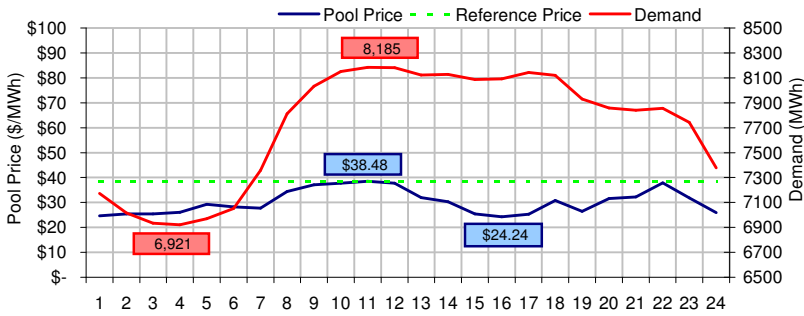
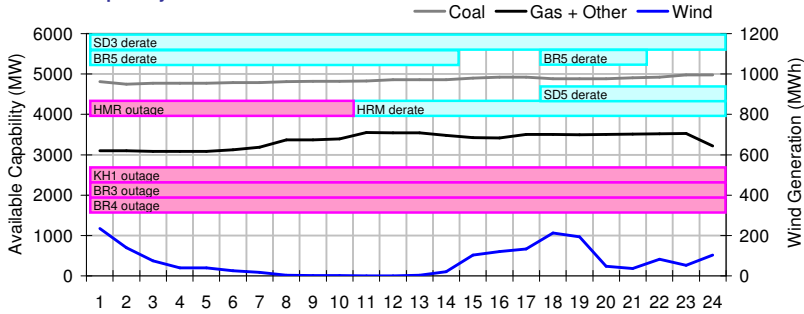


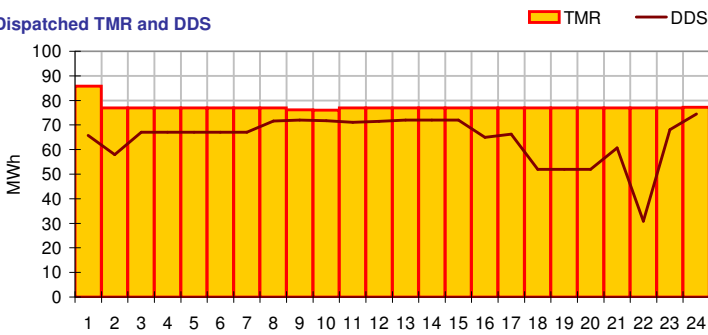
**Pool Price and Demand**



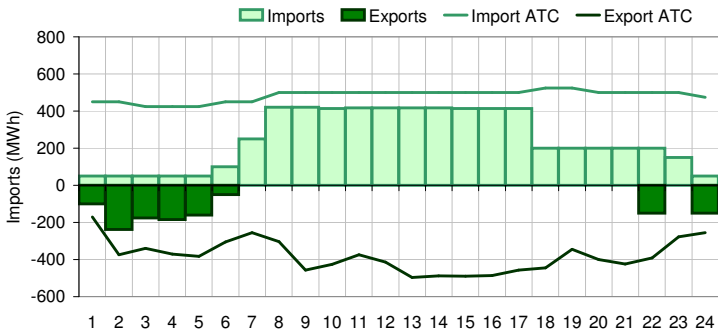
**Available Capacity**



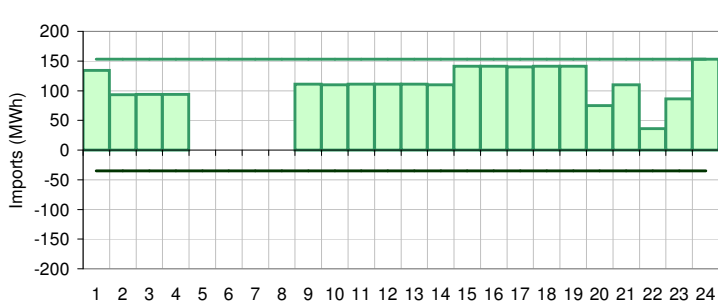
**Dispatched TMR and DDS**



**BC Intertie**



**SK Intertie**



**Pool Price (\$/MWh)**

	Today	This day last week	30 day rolling average	Year to date
average	\$ 30.26	\$ 38.56	\$ 32.18	\$ 52.38
on peak	\$ 32.09	\$ 49.48	\$ 38.87	\$ 62.84
off peak	\$ 26.60	\$ 16.73	\$ 21.85	\$ 38.14

**Gas price**

	Today	This day last week	30 day rolling average	Year to date
AECO-C (\$/GJ)	\$ 3.51	\$ 4.26	\$ 3.53	\$ 4.25
Heat rate (GJ/MWh)	8.62	9.06	9.11	12.32

**Demand (MWh)**

	Today	This day last week	30 day rolling average	Year to date
average	7712	7467	7459	8040
on peak	8017	7777	7813	8385
off peak	7100	6847	6939	7530

**Coal**

	Today	This day last week	30 day rolling average	Year to date
average AC/MC (%)	80.7%	81.4%	81.7%	82.7%
maximum AC/MC (%)	82.8%	86.9%		
minimum AC/MC (%)	79.0%	78.4%		

**Gas + Other**

	Today	This day last week	30 day rolling average	Year to date
average AC/MC (%)	64.2%	57.8%	62.3%	69.1%
maximum AC/MC (%)	67.8%	59.3%		
minimum AC/MC (%)	58.9%	55.2%		

**Wind Generation (MWh)**

	Today	This day last week
average	70	147
minimum	0	6
maximum	235	292

**Transmission Must Run (MWh)**

	Today	This day last week
average	77	89
minimum	76	77
maximum	86	97

**Dispatch Down Service (MWh)**

	Today	This day last week
average	65	0
minimum	31	0
maximum	74	1

**Intertie**

	Today	This day last week	30 day rolling average	Year to date
Mid-C On-Peak	\$ 33.60	\$ 34.76	\$ 24.73	\$ 32.07
Mid-C Off-Peak	\$ 19.06	\$ 24.76	\$ 17.44	\$ 28.00
Minn Hub On-Peak	\$ 35.96	\$ 26.68	\$ 26.21	\$ 33.63
Minn Hub Off-Peak	\$ 2.90	\$ 8.12	\$ 8.28	\$ 17.29
Exchange rate (US:CDN)	1.15985	1.16395		

**BC Import % of ATC**

	Today	This day last week	30 day rolling average	Year to date
BC Import % of ATC	51.4%	51.7%	36.2%	40.9%
SK Import % of ATC	61.1%	68.7%	57.0%	44.7%
BC Export % of ATC	13.2%	0.0%	11.1%	15.1%
SK Export % of ATC	0.0%	0.0%	40.8%	18.4%

**Summary of Average Pool Price and Gas price**

