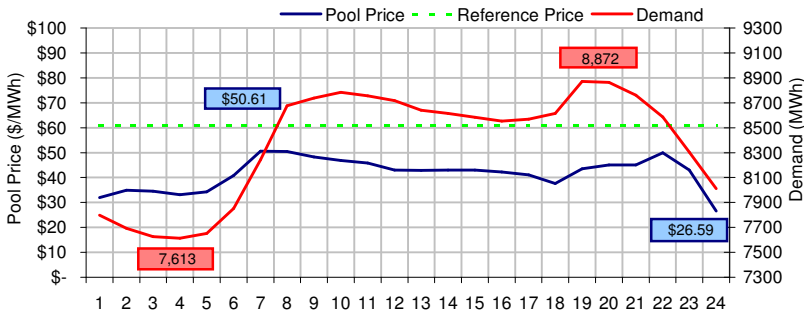
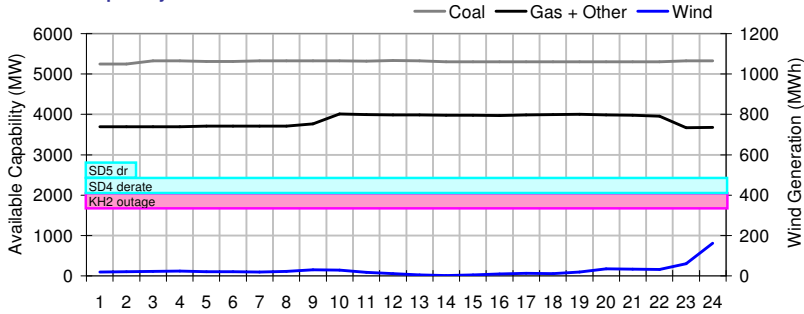


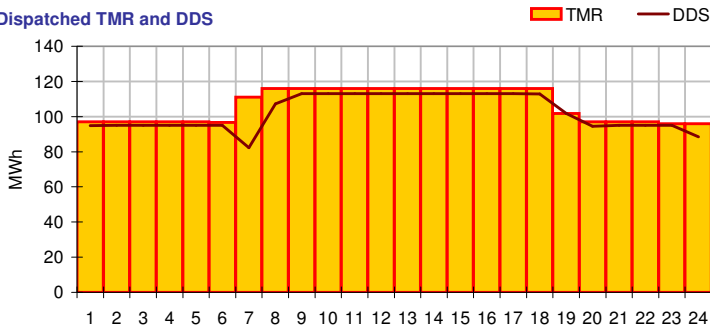
**Pool Price and Demand**



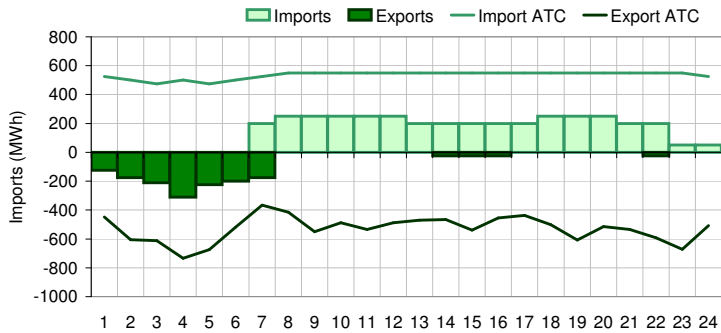
**Available Capacity**



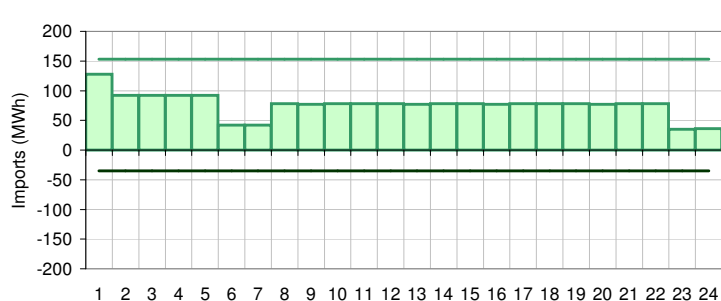
**Dispatched TMR and DDS**



**BC Intertie**



**SK Intertie**



**Pool Price (\$/MWh)**

	Today	This day last week	30 day rolling average	Year to date
average	\$ 41.56	\$ 89.48	\$ 82.40	\$ 77.71
on peak	\$ 44.42	\$ 102.47	\$ 106.29	\$ 93.80
off peak	\$ 35.85	\$ 63.50	\$ 66.49	\$ 57.08

**Gas price**

	Today	This day last week	30 day rolling average	Year to date
AECO-C (\$/GJ)	\$ 4.17	\$ 4.55	\$ 4.76	\$ 5.16
Heat rate (GJ/MWh)	9.98	19.67	17.31	15.06

**Demand (MWh)**

	Today	This day last week	30 day rolling average	Year to date
average	8380	8514	8397	8398
on peak	8665	8808	8743	8759
off peak	7811	7925	7853	7844

**Coal**

	Today	This day last week	30 day rolling average	Year to date
average AC/MC (%)	88.3%	81.7%	81.2%	81.6%
maximum AC/MC (%)	88.7%	85.4%		
minimum AC/MC (%)	87.3%	76.5%		

**Gas + Other**

	Today	This day last week	30 day rolling average	Year to date
average AC/MC (%)	73.9%	72.5%	72.7%	72.8%
maximum AC/MC (%)	76.8%	73.6%		
minimum AC/MC (%)	70.3%	71.8%		

**Wind Generation (MWh)**

	Today	This day last week
average	27	8
minimum	2	0
maximum	161	44

**Transmission Must Run (MWh)**

	Today	This day last week
average	106	92
minimum	96	68
maximum	116	112

**Dispatch Down Service (MWh)**

	Today	This day last week
average	102	48
minimum	82	0
maximum	113	110

**Intertie**

	Today	This day last week	30 day rolling average	Year to date
Mid-C On-Peak	\$ 48.26	\$ 50.81	\$ 39.83	\$ 39.99
Mid-C Off-Peak	\$ 44.40	\$ 49.00	\$ 36.35	\$ 36.59
Minn Hub On-Peak	\$ 44.59	\$ 40.19	\$ 38.58	\$ 44.48
Minn Hub Off-Peak	\$ 33.91	\$ 21.04	\$ 22.44	\$ 26.05
Exchange rate (US:CDN)	1.25602	1.24451		

	Today	This day last week	30 day rolling average	Year to date
BC Import % of ATC	28.8%	62.2%	52.1%	49.7%
SK Import % of ATC	49.5%	76.5%	69.2%	57.6%
BC Export % of ATC	11.9%	15.4%	24.7%	25.2%
SK Export % of ATC	0.0%	0.0%	4.7%	6.3%

**Summary of Average Pool Price and Gas price**

