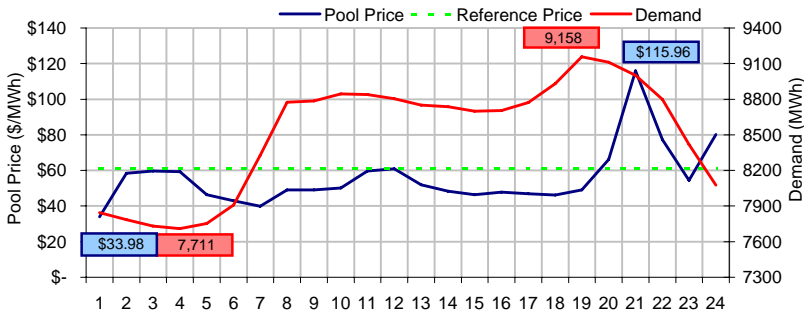
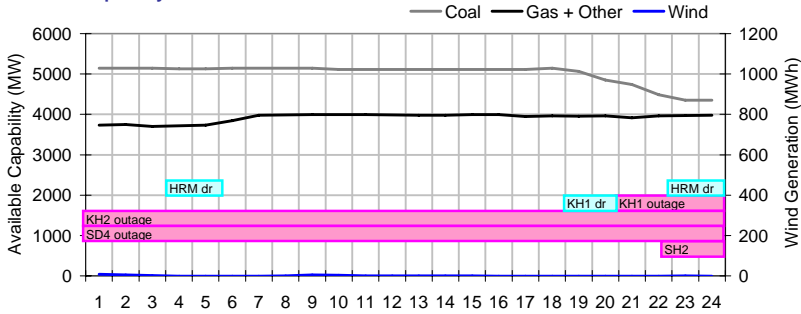


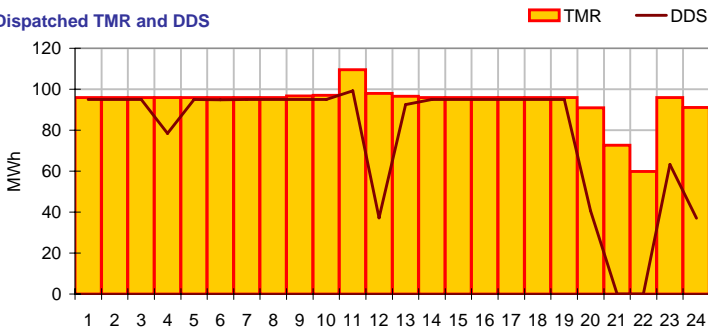
Pool Price and Demand



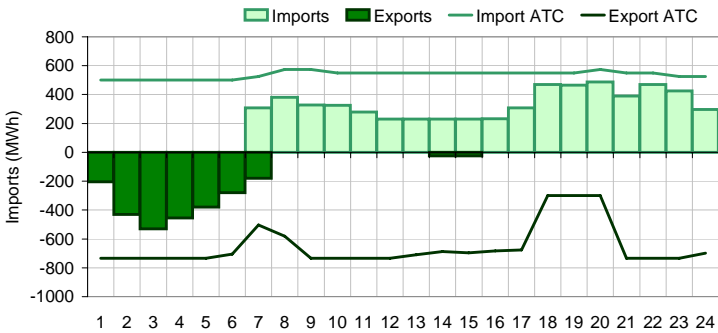
Available Capability



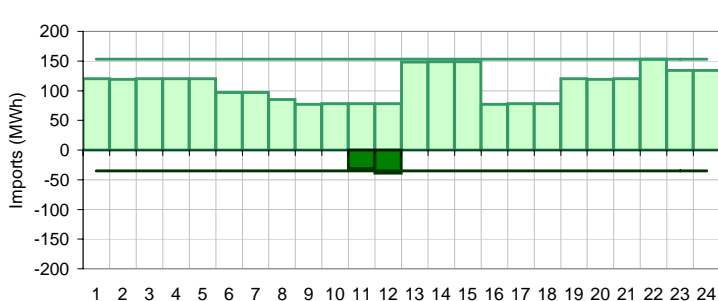
Dispatched TMR and DDS



BC Intertie



SK Intertie



Pool Price (\$/MWh)

	Today	This day last week	30 day rolling average	Year to date
average	\$ 55.83	\$ 50.34	\$ 90.05	\$ 78.46
on peak	\$ 57.44	\$ 59.96	\$ 109.11	\$ 95.73
off peak	\$ 52.61	\$ 31.10	\$ 64.60	\$ 56.77

Gas price

	Today	This day last week	30 day rolling average	Year to date
AECO-C (\$/GJ)	\$ 4.47	\$ 4.79	\$ 4.85	\$ 5.22
Heat rate (GJ/MWh)	12.49	10.50	18.56	15.05

Demand (MWh)

	Today	This day last week	30 day rolling average	Year to date
average	8511	8394	8385	8398
on peak	8820	8731	8734	8763
off peak	7892	7719	7830	7847

Coal

	Today	This day last week	30 day rolling average	Year to date
average AC/MC (%)	83.3%	85.6%	80.2%	81.6%
maximum AC/MC (%)	85.6%	86.5%		
minimum AC/MC (%)	72.4%	84.2%		

Gas + Other

	Today	This day last week	30 day rolling average	Year to date
average AC/MC (%)	75.1%	70.4%	72.7%	72.7%
maximum AC/MC (%)	76.6%	71.0%		
minimum AC/MC (%)	71.0%	70.0%		

Wind Generation (MWh)

	Today	This day last week	30 day rolling average	Year to date
average	0	265		
minimum	0	23		
maximum	8	454		

Transmission Must Run (MWh)

	Today	This day last week	30 day rolling average	Year to date
average	94	107		
minimum	60	89		
maximum	110	116		

Dispatch Down Service (MWh)

	Today	This day last week	30 day rolling average	Year to date
average	78	94		
minimum	0	0		
maximum	99	163		

Intertie

	Today	This day last week	30 day rolling average	Year to date
Mid-C On-Peak	\$ 48.65	\$ 53.72	\$ 39.57	\$ 40.07
Mid-C Off-Peak	\$ 46.56	\$ 49.66	\$ 36.03	\$ 36.60
Minn Hub On-Peak	\$ 46.64	\$ 32.34	\$ 40.99	\$ 45.01
Minn Hub Off-Peak	\$ 24.56	\$ 15.86	\$ 23.87	\$ 26.08
Exchange rate (US:CDN)	1.24370	1.22280		

	Today	This day last week	30 day rolling average	Year to date
BC Import % of ATC	47.2%	35.6%	51.1%	49.7%
SK Import % of ATC	72.1%	77.7%	67.1%	56.8%
BC Export % of ATC	16.0%	79.3%	26.7%	27.2%
SK Export % of ATC	8.3%	0.0%	4.4%	6.7%

Summary of Average Pool Price and Gas price

