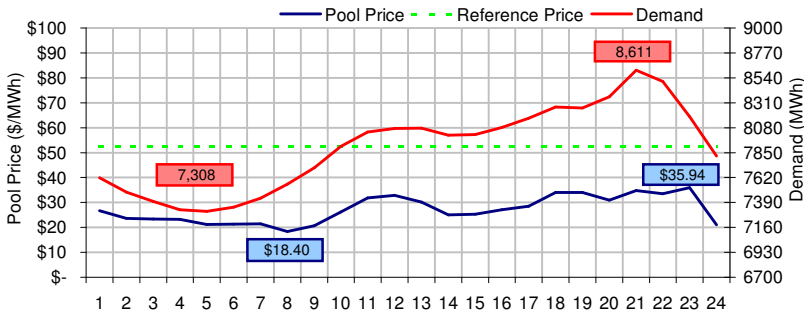
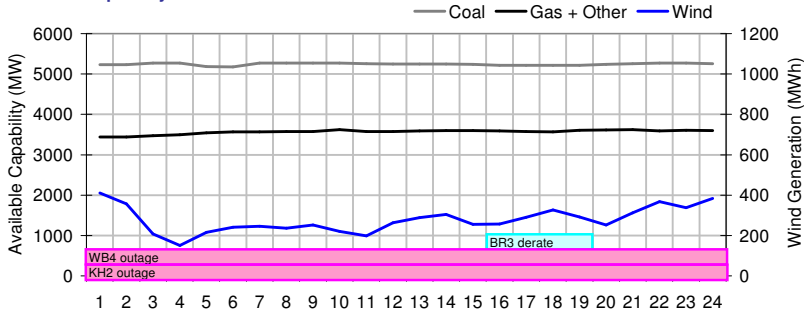


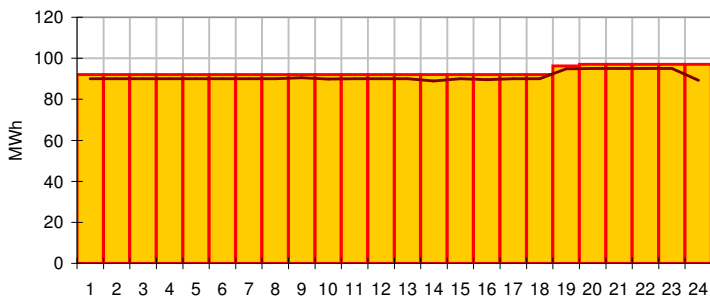
### Pool Price and Demand



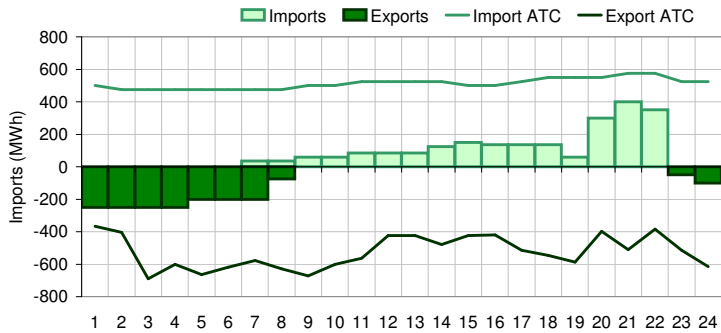
### Available Capacity



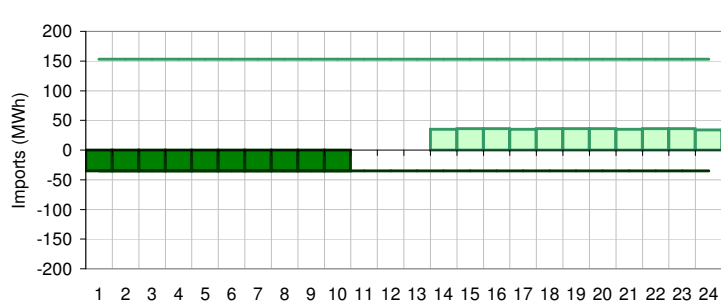
### Dispatched TMR and DDS



### BC Intertie



### SK Intertie



### Pool Price (\$/MWh)

	Today	This day last week	30 day rolling average	Year to date
average	\$ 27.13	\$ 45.51	\$ 49.12	\$ 68.01
on peak	NA	NA	\$ 56.96	\$ 81.72
off peak	\$ 27.13	\$ 45.51	\$ 41.94	\$ 50.71

### Gas price

	Today	This day last week	30 day rolling average	Year to date
AECO-C (\$/GJ)	\$ 3.80	\$ 4.02	\$ 4.21	\$ 4.85
Heat rate (GJ/MWh)	7.14	11.33	11.66	14.02

### Demand (MWh)

	Today	This day last week	30 day rolling average	Year to date
average	7899	8215	8375	8394
on peak	NA	NA	8705	8748
off peak	7899	8215	7918	7872

### Coal

	Today	This day last week	30 day rolling average	Year to date
average AC/MC (%)	87.2%	83.1%	83.4%	82.4%
maximum AC/MC (%)	87.7%	88.3%		
minimum AC/MC (%)	86.1%	0.0%		

### Gas + Other

	Today	This day last week	30 day rolling average	Year to date
average AC/MC (%)	68.4%	71.9%	74.2%	73.1%
maximum AC/MC (%)	69.4%	80.3%		
minimum AC/MC (%)	66.0%	0.0%		

### Wind Generation (MWh)

	Today	This day last week
average	278	166
minimum	151	41
maximum	410	390

### Transmission Must Run (MWh)

	Today	This day last week
average	93	92
minimum	92	0
maximum	97	121

### Dispatch Down Service (MWh)

	Today	This day last week
average	91	63
minimum	89	0
maximum	95	97

### Intertie

	Today	This day last week	30 day rolling average	Year to date
Mid-C On-Peak	NA	NA	\$ 35.65	\$ 38.21
Mid-C Off-Peak	\$ 33.37	\$ 42.62	\$ 32.54	\$ 34.68
Minn Hub On-Peak	\$ 28.63	\$ 13.99	\$ 31.00	\$ 39.92
Minn Hub Off-Peak	\$ 16.86	\$ 1.27	\$ 18.82	\$ 23.65
Exchange rate (US:CDN)	1.27227	1.28778		

### BC Import % of ATC

	Today	This day last week	30 day rolling average	Year to date
BC Import % of ATC	18.2%	34.7%	46.6%	48.0%
SK Import % of ATC	10.6%	38.6%	37.6%	46.7%
BC Export % of ATC	14.5%	8.7%	8.9%	19.8%
SK Export % of ATC	41.7%	0.0%	2.4%	5.8%

### Summary of Average Pool Price and Gas price

